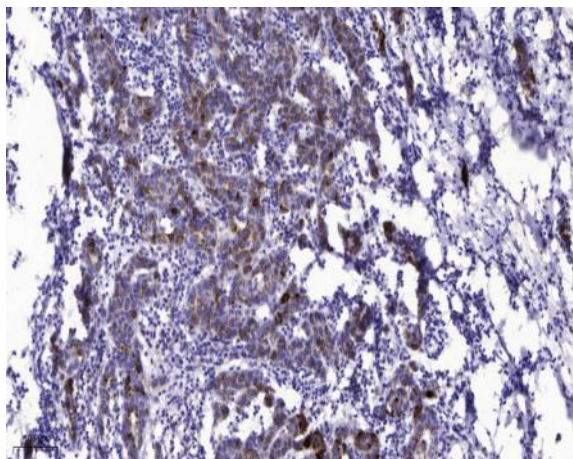


PSM rabbit pAb

Catalog No :	YT7851
Reactivity :	Human;Rat;Mouse;
Applications :	WB;IHC
Target :	PSM
Fields :	>>Alanine, aspartate and glutamate metabolism;>>Metabolic pathways;>>Vitamin digestion and absorption
Gene Name :	FOLH1 FOLH NAALAD1 PSM PSMA GIG27
Protein Name :	PSM
Human Gene Id :	2346
Human Swiss Prot No :	Q04609
Mouse Gene Id :	53320
Mouse Swiss Prot No :	O35409
Rat Gene Id :	85309
Rat Swiss Prot No :	P70627
Immunogen :	Synthesized peptide derived from human PSM AA range: 571-620
Specificity :	This antibody detects endogenous levels of Human PSM
Formulation :	Liquid in PBS containing 50% glycerol, 0.5% BSA and 0.02% sodium azide.
Source :	Polyclonal, Rabbit,IgG
Dilution :	WB 1:500-2000;IHC 1:50-300

Purification :	The antibody was affinity-purified from rabbit antiserum by affinity-chromatography using epitope-specific immunogen.
Concentration :	1 mg/ml
Storage Stability :	-15°C to -25°C/1 year(Do not lower than -25°C)
Molecularweight :	83kD
Subcellular Location :	Cell membrane ; Single-pass type II membrane protein .; [Isoform PSMA']: Cytoplasm .
Expression :	Highly expressed in prostate epithelium. Detected in urinary bladder, kidney, testis, ovary, fallopian tube, breast, adrenal gland, liver, esophagus, stomach, small intestine, colon and brain (at protein level). Detected in the small intestine, brain, kidney, liver, spleen, colon, trachea, spinal cord and the capillary endothelium of a variety of tumors. Expressed specifically in jejunum brush border membranes. In the brain, highly expressed in the ventral striatum and brain stem. Also expressed in fetal liver and kidney. Isoform PSMA' is the most abundant form in normal prostate. Isoform PSMA-1 is the most abundant form in primary prostate tumors. Isoform PSMA-3 is also found in normal prostate as well as in brain and liver. Isoform PSMA-9 is specifically expressed in prostate cancer.

Products Images



Immunohistochemical analysis of paraffin-embedded human Breast cancer. 1, Antibody was diluted at 1:200(4° overnight). 2, Tris-EDTA,pH9.0 was used for antigen retrieval. 3,Secondary antibody was diluted at 1:200(room temperature, 45min).