

**MUSK rabbit pAb**

<b>Catalog No :</b>	YT7822
<b>Reactivity :</b>	Human;Rat;Mouse;
<b>Applications :</b>	WB;IHC
<b>Target :</b>	MUSK
<b>Gene Name :</b>	MUSK
<b>Protein Name :</b>	MUSK
<b>Human Gene Id :</b>	4593
<b>Human Swiss Prot No :</b>	O15146
<b>Mouse Gene Id :</b>	18198
<b>Mouse Swiss Prot No :</b>	Q61006
<b>Rat Gene Id :</b>	81725
<b>Rat Swiss Prot No :</b>	Q62838
<b>Immunogen :</b>	Synthesized peptide derived from human MUSK
<b>Specificity :</b>	This antibody detects endogenous levels of Human MUSK
<b>Formulation :</b>	Liquid in PBS containing 50% glycerol, 0.5% BSA and 0.02% sodium azide.
<b>Source :</b>	Polyclonal, Rabbit,IgG
<b>Dilution :</b>	WB 1:500-2000;IHC 1:50-300
<b>Purification :</b>	The antibody was affinity-purified from rabbit antiserum by affinity-chromatography using epitope-specific immunogen.

**Concentration :** 1 mg/ml

---

**Storage Stability :** -15°C to -25°C/1 year(Do not lower than -25°C)

---

**Molecularweight :** 96kD

---

**Background :** This gene encodes a muscle-specific tyrosine kinase receptor. The encoded protein may play a role in clustering of the acetylcholine receptor in the postsynaptic neuromuscular junction. Mutations in this gene have been associated with congenital myasthenic syndrome. Alternatively spliced transcript variants have been described.[provided by RefSeq, Oct 2009],

---

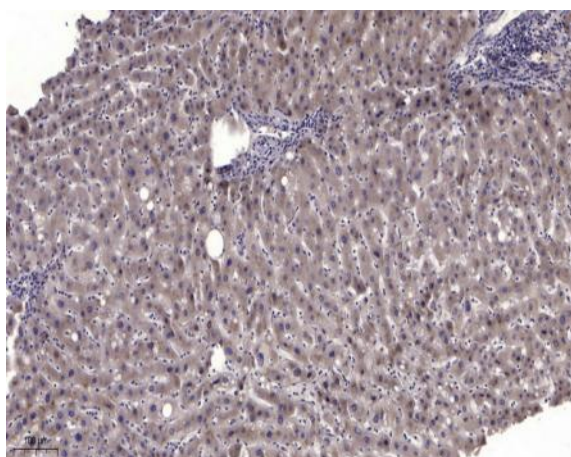
**Function :** catalytic activity:ATP + a [protein]-L-tyrosine = ADP + a [protein]-L-tyrosine phosphate.,disease:Defects in MUSK is a cause of autosomal recessive congenital myasthenic syndrome (CMS) [MIM:608931]. Congenital myasthenic syndromes are inherited disorders of neuromuscular transmission that stem from mutations in presynaptic, synaptic, or postsynaptic proteins. MUSK mutations lead to decreased agrin-dependent AChR aggregation, a critical step in the formation of the neuromuscular junction.,function:Receptor tyrosine kinase that is a key mediator of agrin's action and is involved in neuromuscular junction (NMJ) organization.,online information:MuSK entry,similarity:Belongs to the protein kinase superfamily. Tyr protein kinase family.,similarity:Contains 1 FZ (frizzled) domain.,similarity:Contains 1 protein kinase domain.,similarity:Contains 3 Ig-like C2-type (immunoglobulin-like) domains.,s

---

**Subcellular Location :** Cell junction, synapse, postsynaptic cell membrane ; Single-pass type I membrane protein . Colocalizes with acetylcholine receptors (AChR) to the postsynaptic cell membrane of the neuromuscular junction. .

---

## Products Images



Immunohistochemical analysis of paraffin-embedded human liver cancer. 1, Antibody was diluted at 1:200(4° overnight). 2, Tris-EDTA,pH9.0 was used for antigen retrieval. 3,Secondary antibody was diluted at 1:200(room temperature, 45min).