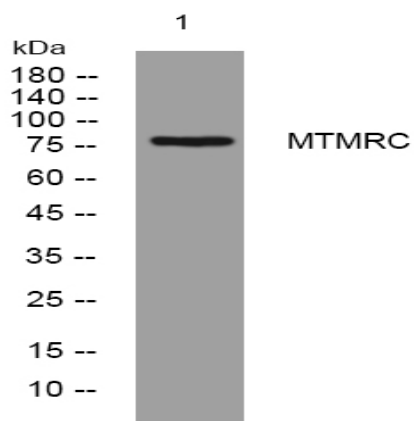


MTMRC rabbit pAb

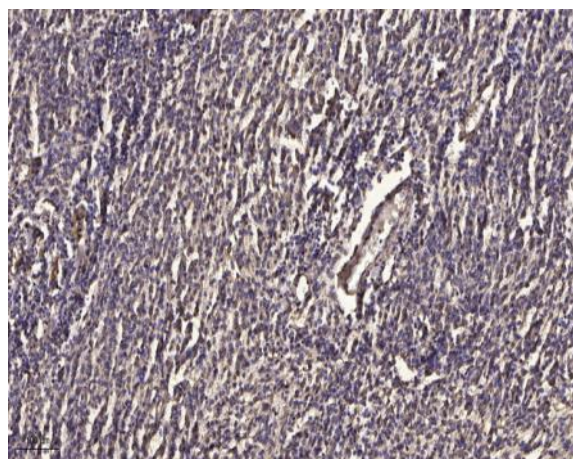
Catalog No :	YT7765
Reactivity :	Human;Mouse;Rat
Applications :	WB;ELISA;IHC
Target :	MTMRC
Gene Name :	MTMR12 KIAA1682 PIP3AP
Protein Name :	MTMRC
Human Gene Id :	54545
Human Swiss Prot No :	Q9C0I1
Mouse Gene Id :	268783
Mouse Swiss Prot No :	Q80TA6
Rat Gene Id :	310155
Rat Swiss Prot No :	Q5FVM6
Immunogen :	Synthesized peptide derived from human MTMRC AA range: 523-573
Specificity :	This antibody detects endogenous levels of MTMRC at Human/Mouse/Rat
Formulation :	Liquid in PBS containing 50% glycerol, 0.5% BSA and 0.02% sodium azide.
Source :	Polyclonal, Rabbit,IgG
Dilution :	WB 1:500-2000;IHC 1:50-300; ELISA 2000-20000
Purification :	The antibody was affinity-purified from rabbit antiserum by affinity-chromatography using epitope-specific immunogen.

Concentration :	1 mg/ml
Storage Stability :	-15°C to -25°C/1 year(Do not lower than -25°C)
Molecularweight :	82kD
Background :	Phosphatidylinositide 3-kinase-derived membrane-anchored phosphatidylinositides, such as phosphatidylinositol 3-phosphate (PtdIns(3)P), regulate diverse cellular processes. The protein encoded by this gene functions as an adaptor subunit in a complex with an active PtdIns(3)P 3-phosphatase. Alternatively spliced transcript variants encoding different isoforms have been found for this gene. [provided by RefSeq, Jun 2014],
Function :	caution:Lacks the phosphocysteine intermediate Cys active site in position 391 that is replaced by a Glu residue, preventing the hydrolase activity.,function:Inactive phosphatase that plays a role as an adapter for the phosphatase myotubularin to regulate myotubularin intracellular location.,miscellaneous:Catalytically inactive phosphatase.,similarity:Belongs to the protein-tyrosine phosphatase family. Non-receptor class myotubularin subfamily.,similarity:Contains 1 myotubularin phosphatase domain.,subcellular location:Localizes to punctate vesicles when associated with MTM1.,subunit:Interacts with myotubularin MTM1 and myotubularin-related MTMR2.,tissue specificity:Ubiquitous with prominent expression in brain, heart, kidney, placenta, and lung.,
Subcellular Location :	Cytoplasm . Sarcoplasmic reticulum . Cytoplasm, myofibril, sarcomere . Localizes to punctate vesicles when associated with MTM1 (PubMed:12847286). Localizes to triads, a structure formed by a T tubule and two sarcoplasmic reticulum terminal cisterna (By similarity). In skeletal muscles, co-localizes with MTM1 in the sarcomere (By similarity). Partially localizes to the sarcoplasmic reticulum in skeletal muscles (By similarity). .
Expression :	Expressed in skeletal muscles (at protein level) (PubMed:23818870). Ubiquitous with prominent expression in brain, heart, kidney, placenta, and lung (PubMed:11504939).

Products Images



Western blot analysis of lysates from HpeG2 cells, primary antibody was diluted at 1:1000, 4° over night



Immunohistochemical analysis of paraffin-embedded human meningioma. 1, Antibody was diluted at 1:200(4° overnight). 2, Tris-EDTA,pH9.0 was used for antigen retrieval. 3,Secondary antibody was diluted at 1:200(room temperature, 45min).