

HACL1 rabbit pAb

Catalog No :	YT7740
Reactivity :	Human;Mouse;Rat
Applications :	WB
Target :	HACL1
Fields :	>>Peroxisome
Gene Name :	HACL1 HPCL HPCL2 PHYH2 HSPC279
Protein Name :	HACL1
Human Gene Id :	26061
Human Swiss Prot No :	Q9UJ83
Mouse Gene Id :	56794
Mouse Swiss Prot No :	Q9QXE0
Rat Gene Id :	85255
Rat Swiss Prot No :	Q8CHM7
Immunogen :	Synthesized peptide derived from human HACL1 AA range: 323-373
Specificity :	This antibody detects endogenous levels of HACL1 at Human/Mouse/Rat
Formulation :	Liquid in PBS containing 50% glycerol, 0.5% BSA and 0.02% sodium azide.
Source :	Polyclonal, Rabbit,IgG
Dilution :	WB 1:500-2000
Purification :	The antibody was affinity-purified from rabbit antiserum by affinity-

chromatography using epitope-specific immunogen.

Concentration : 1 mg/ml

Storage Stability : -15°C to -25°C/1 year (Do not lower than -25°C)

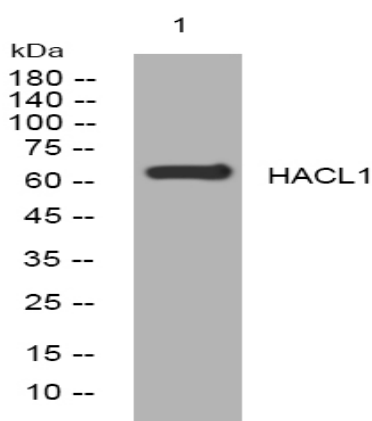
Molecularweight : 64kD

Function : catalytic activity:2-hydroxyphytanoyl-CoA = pristanal + formyl-CoA., cofactor: Binds 1 magnesium ion per subunit., cofactor: Binds 1 thiamine pyrophosphate per subunit., function: Catalyzes a carbon-carbon cleavage reaction; cleaves a 2-hydroxy-3-methylacyl-CoA into formyl-CoA and a 2-methyl-branched fatty aldehyde., pathway: Lipid metabolism; fatty acid metabolism., similarity: Belongs to the TPP enzyme family., subunit: Homotetramer., tissue specificity: Expressed in high levels in liver, also expressed in kidney, heart and skeletal muscle.,

Subcellular Location : Peroxisome .

Expression : Widely expressed.

Products Images



Western blot analysis of lysates from U2OS cells, primary antibody was diluted at 1:1000, 4° over night