

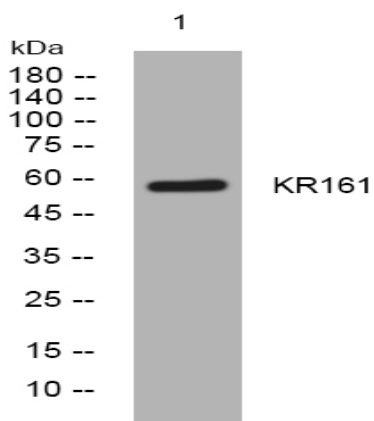
## KR161 rabbit pAb

<b>Catalog No :</b>	YT7739
<b>Reactivity :</b>	Human;Mouse
<b>Applications :</b>	WB;IHC
<b>Target :</b>	KR161
<b>Gene Name :</b>	KRTAP16-1 KAP16.1
<b>Protein Name :</b>	KR161
<b>Human Gene Id :</b>	100505753
<b>Human Swiss Prot No :</b>	A8MUX0
<b>Mouse Gene Id :</b>	100504183
<b>Mouse Swiss Prot No :</b>	A2A5X5
<b>Immunogen :</b>	Synthesized peptide derived from human KR161 AA range: 19-69
<b>Specificity :</b>	This antibody detects endogenous levels of KR161 at Human/Mouse
<b>Formulation :</b>	Liquid in PBS containing 50% glycerol, 0.5% BSA and 0.02% sodium azide.
<b>Source :</b>	Polyclonal, Rabbit,IgG
<b>Dilution :</b>	WB 1:500-2000;IHC 1:50-300
<b>Purification :</b>	The antibody was affinity-purified from rabbit antiserum by affinity-chromatography using epitope-specific immunogen.
<b>Concentration :</b>	1 mg/ml
<b>Storage Stability :</b>	-15°C to -25°C/1 year(Do not lower than -25°C)

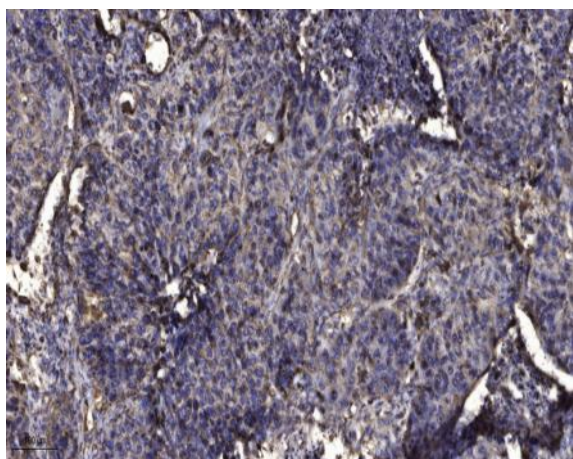
**Molecularweight :** 57kD

**Subcellular Location :** keratin filament,

## Products Images



Western blot analysis of lysates from HEK293 cells, primary antibody was diluted at 1:1000, 4° over night



Immunohistochemical analysis of paraffin-embedded human Squamous cell carcinoma of lung. 1, Antibody was diluted at 1:200(4° overnight). 2, Tris-EDTA,pH9.0 was used for antigen retrieval. 3,Secondary antibody was diluted at 1:200(room temperature, 45min).