

DUX3 rabbit pAb

Catalog No :	YT7736
Reactivity :	Human
Applications :	WB
Target :	DUX3
Gene Name :	DUX3
Protein Name :	DUX3
Human Gene Id :	26582
Human Swiss Prot No :	Q96PT4
Immunogen :	Synthesized peptide derived from human DUX3 AA range: 27-77
Specificity :	This antibody detects endogenous levels of DUX3 at Human
Formulation :	Liquid in PBS containing 50% glycerol, 0.5% BSA and 0.02% sodium azide.
Source :	Polyclonal, Rabbit,IgG
Dilution :	WB 1:500-2000
Purification :	The antibody was affinity-purified from rabbit antiserum by affinity-chromatography using epitope-specific immunogen.
Concentration :	1 mg/ml
Storage Stability :	-15 °C to -25 °C/1 year(Do not lower than -25 °C)
Molecularweight :	22kD
Background :	The human genome contains hundreds of repeats of the 3.3-kb family in regions associated with heterochromatin. The DUX gene family, including DUX3, resides within these 3.3-kb repeated elements (Beckers et al., 2001 [PubMed

11245978]). See DUX4 (MIM 606009).[supplied by OMIM, Mar 2008],

Function :

developmental stage:Expressed in fetal tissue.,miscellaneous:DUX genes are present in 3.3-kilobase elements, a tandem repeat family scattered in the genome found on the short arms of all acrocentric chromosomes as well as on several other chromosomes. May be functional despite lack of introns and of a poly(A) addition signal.,similarity:Belongs to the paired homeobox family.,similarity:Contains 2 homeobox DNA-binding domains.,tissue specificity:Expressed in hepatoma Hep3B cells.,

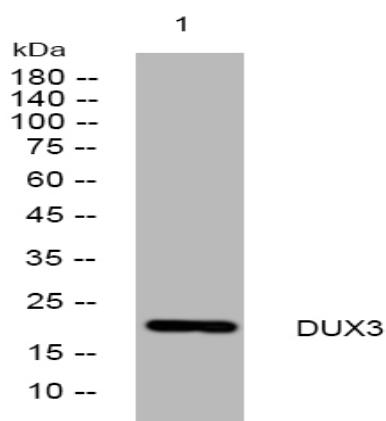
Subcellular Location :

Nucleus .

Expression :

Expressed in hepatoma Hep3B cells.

Products Images



Western blot analysis of lysates from K562 cells, primary antibody was diluted at 1:1000, 4° over night