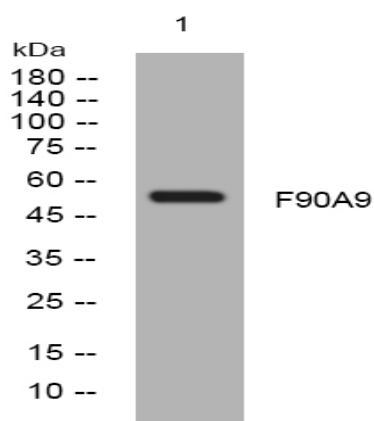


**F90A9 rabbit pAb**

<b>Catalog No :</b>	YT7732
<b>Reactivity :</b>	Human
<b>Applications :</b>	WB
<b>Target :</b>	F90A9
<b>Gene Name :</b>	FAM90A9P FAM90A9
<b>Protein Name :</b>	F90A9
<b>Human Swiss Prot No :</b>	A6NNJ1
<b>Immunogen :</b>	Synthesized peptide derived from human F90A9 AA range: 70-120
<b>Specificity :</b>	This antibody detects endogenous levels of F90A9 at Human
<b>Formulation :</b>	Liquid in PBS containing 50% glycerol, 0.5% BSA and 0.02% sodium azide.
<b>Source :</b>	Polyclonal, Rabbit,IgG
<b>Dilution :</b>	WB 1[?]500-2000
<b>Purification :</b>	The antibody was affinity-purified from rabbit antiserum by affinity-chromatography using epitope-specific immunogen.
<b>Concentration :</b>	1 mg/ml
<b>Storage Stability :</b>	-15°C to -25°C/1 year(Do not lower than -25°C)
<b>Molecularweight :</b>	51kD
<b>Background :</b>	FAM90A9 belongs to subfamily II of the primate-specific FAM90A gene family, which originated from multiple duplications and rearrangements (Bosch et al., 2007 [PubMed 17684299]). For background information on the FAM90A gene family, as well as information on the evolution of FAM90A genes, see FAM90A1 (MIM 613041).[supplied by OMIM, Oct 2009],

**Function :**

caution:Could be the product of a pseudogene.,similarity:Belongs to the FAM90 family.,

**Products Images**

Western blot analysis of lysates from MCF-7 cells, primary antibody was diluted at 1:1000, 4° over night