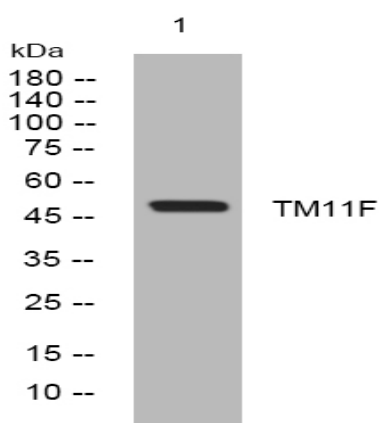


TM11F rabbit pAb

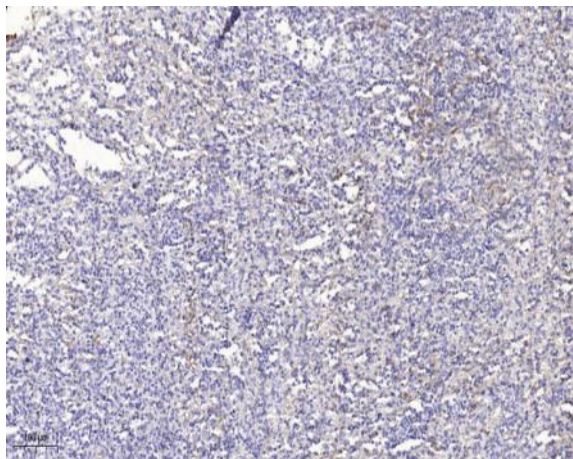
Catalog No :	YT7729
Reactivity :	Human;Mouse
Applications :	WB;ELISA;IHC
Target :	TM11F
Gene Name :	TMPRSS11F HATL4
Protein Name :	TM11F
Human Gene Id :	389208
Human Swiss Prot No :	Q6ZWK6
Mouse Gene Id :	243083
Mouse Swiss Prot No :	Q8BHM9
Immunogen :	Synthesized peptide derived from human TM11F AA range: 110-160
Specificity :	This antibody detects endogenous levels of TM11F at Human/Mouse
Formulation :	Liquid in PBS containing 50% glycerol, 0.5% BSA and 0.02% sodium azide.
Source :	Polyclonal, Rabbit,IgG
Dilution :	WB 1:500-2000;IHC 1:50-300; ELISA 2000-20000
Purification :	The antibody was affinity-purified from rabbit antiserum by affinity-chromatography using epitope-specific immunogen.
Concentration :	1 mg/ml
Storage Stability :	-15°C to -25°C/1 year(Do not lower than -25°C)

Molecularweight : 48kD**Function :** function:Probable serine protease.,similarity:Belongs to the peptidase S1 family.,similarity:Contains 1 peptidase S1 domain.,similarity:Contains 1 SEA domain.,**Subcellular Location :** Membrane ; Single-pass type II membrane protein .

Products Images



Western blot analysis of lysates from U2OS cells, primary antibody was diluted at 1:1000, 4° over night



Immunohistochemical analysis of paraffin-embedded human spleen. 1, Antibody was diluted at 1:200(4° overnight). 2, Tris-EDTA,pH9.0 was used for antigen retrieval. 3,Secondary antibody was diluted at 1:200(room temperature, 45min).