

FAN1 rabbit pAb

Catalog No :	YT7724
Reactivity :	Human;Mouse
Applications :	WB
Target :	FAN1
Fields :	>>Fanconi anemia pathway
Gene Name :	FAN1 KIAA1018 MTMR15
Protein Name :	FAN1
Human Gene Id :	22909
Human Swiss Prot No :	Q9Y2M0
Mouse Gene Id :	330554
Mouse Swiss Prot No :	Q69ZT1
Immunogen :	Synthesized peptide derived from human FAN1 AA range: 801-851
Specificity :	This antibody detects endogenous levels of FAN1 at Human/Mouse
Formulation :	Liquid in PBS containing 50% glycerol, 0.5% BSA and 0.02% sodium azide.
Source :	Polyclonal, Rabbit,IgG
Dilution :	WB 1[?]500-2000
Purification :	The antibody was affinity-purified from rabbit antiserum by affinity-chromatography using epitope-specific immunogen.
Concentration :	1 mg/ml

Storage Stability : -15°C to -25°C/1 year(Do not lower than -25°C)

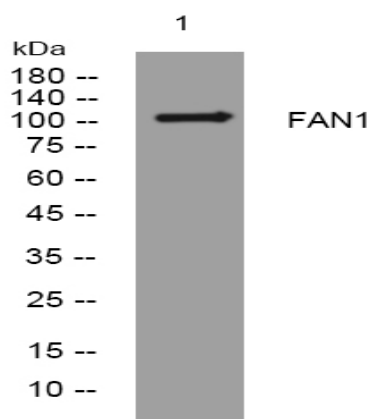
Molecularweight : 112kD

Background : This gene plays a role in DNA interstrand cross-link repair and encodes a protein with 5' flap endonuclease and 3' exonuclease activity. Mutations in this gene cause karyomegalic interstitial nephritis. Alternatively spliced transcript variants encoding distinct isoforms have been described. [provided by RefSeq, Feb 2016],

Function : similarity:Belongs to the MTMR15 family.,

Subcellular Location : Nucleus . Localizes at sites of DNA damage following recruitment by monoubiquitinated FANCD2 (PubMed:20603015, PubMed:20603016). Localizes to stalled replication forks via its UBZ4-type zinc finger (PubMed:20935496). .

Products Images



Western blot analysis of lysates from HeLa cells, primary antibody was diluted at 1:1000, 4° over night