

STABP rabbit pAb

Catalog No :	YT7723
Reactivity :	Human;Mouse;Rat
Applications :	WB
Target :	STABP
Fields :	>>Endocytosis
Gene Name :	STAMBP AMSH
Protein Name :	STABP
Human Gene Id :	10617
Human Swiss Prot No :	O95630
Mouse Gene Id :	70527
Mouse Swiss Prot No :	Q9CQ26
Rat Gene Id :	171565
Rat Swiss Prot No :	Q8R424
Immunogen :	Synthesized peptide derived from human STABP AA range: 109-159
Specificity :	This antibody detects endogenous levels of STABP at Human/Mouse/Rat
Formulation :	Liquid in PBS containing 50% glycerol, 0.5% BSA and 0.02% sodium azide.
Source :	Polyclonal, Rabbit,IgG
Dilution :	WB 1[?]500-2000
Purification :	The antibody was affinity-purified from rabbit antiserum by affinity-

chromatography using epitope-specific immunogen.

Concentration : 1 mg/ml

Storage Stability : -15°C to -25°C/1 year(Do not lower than -25°C)

Molecularweight : 47kD

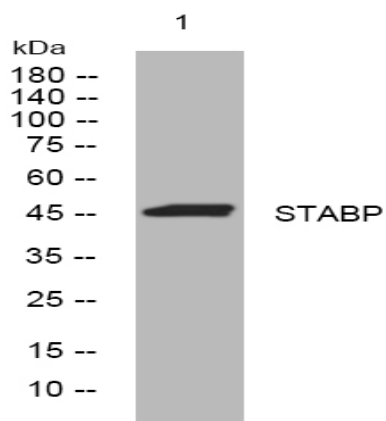
Background : Cytokine-mediated signal transduction in the JAK-STAT cascade requires the involvement of adaptor molecules. One such signal-transducing adaptor molecule contains an SH3 domain that is required for induction of MYC and cell growth. The protein encoded by this gene binds to the SH3 domain of the signal-transducing adaptor molecule, and plays a critical role in cytokine-mediated signaling for MYC induction and cell cycle progression. Multiple alternatively spliced transcript variants encoding the same protein isoform have been found for this gene. [provided by RefSeq, Jul 2008],

Function : catalytic activity:Ubiquitin C-terminal thioester + H(2)O = ubiquitin + a thiol.,cofactor:Binds 2 zinc ion per subunit.,domain:The JAMM motif is essential for the protease activity.,enzyme regulation:Inhibited by N-ethylmaleimide.,function:Zinc metalloprotease that specifically cleaves 'Lys-63'-linked polyubiquitin chains. Does not cleave 'Lys-48'-linked polyubiquitin chains (By similarity). Functions at the endosome and is able to oppose the ubiquitin-dependent sorting of receptors to lysosomes. Plays a role in signal transduction for cell growth and MYC induction mediated by IL-2 and GM-CSF. Potentiates BMP (bone morphogenetic protein) signaling by antagonizing the inhibitory action of SMAD6 and SMAD7.,miscellaneous:X-ray crystallography studies of STAMBPL1, another member of the peptidase M67C family, has shown that Glu-280 binds zinc indirectly via a water molecule. Nevertheless, thi

Subcellular Location : Nucleus. Membrane; Peripheral membrane protein. Cytoplasm. Early endosome.

Expression : Ubiquitously expressed.

Products Images



Western blot analysis of lysates from HpeG2 cells, primary antibody was diluted at 1:1000, 4° over night