

## TMPSC rabbit pAb

<b>Catalog No :</b>	YT7706
<b>Reactivity :</b>	Human;Mouse
<b>Applications :</b>	WB
<b>Target :</b>	TMPSC
<b>Gene Name :</b>	TMPRSS12
<b>Protein Name :</b>	TMPSC
<b>Human Gene Id :</b>	283471
<b>Human Swiss Prot No :</b>	Q86WS5
<b>Mouse Gene Id :</b>	75002
<b>Mouse Swiss Prot No :</b>	Q3V0Q7
<b>Immunogen :</b>	Synthesized peptide derived from human TMPSC AA range: 185-235
<b>Specificity :</b>	This antibody detects endogenous levels of TMPSC at Human/Mouse
<b>Formulation :</b>	Liquid in PBS containing 50% glycerol, 0.5% BSA and 0.02% sodium azide.
<b>Source :</b>	Polyclonal, Rabbit,IgG
<b>Dilution :</b>	WB 1[?]500-2000
<b>Purification :</b>	The antibody was affinity-purified from rabbit antiserum by affinity-chromatography using epitope-specific immunogen.
<b>Concentration :</b>	1 mg/ml
<b>Storage Stability :</b>	-15°C to -25°C/1 year(Do not lower than -25°C)

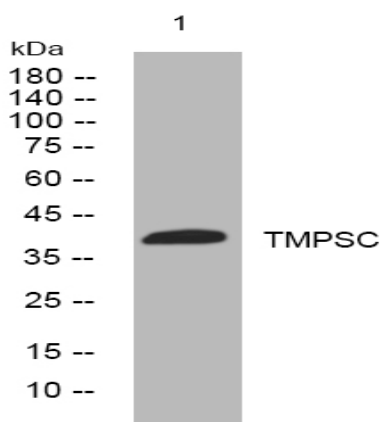
**Molecularweight :** 38kD

**Function :** similarity:Belongs to the peptidase S1 family.,similarity:Contains 1 peptidase S1 domain.,

**Subcellular Location :** Membrane ; Single-pass membrane protein .

**Expression :** In testis, expressed in spermatocytes and spermatids. Expressed in colorectal cancer (at protein level).

## Products Images



Western blot analysis of lysates from A549 cells, primary antibody was diluted at 1:1000, 4° over night