

## PA2GC rabbit pAb

<b>Catalog No :</b>	YT7702
<b>Reactivity :</b>	Human;Mouse;Rat
<b>Applications :</b>	WB
<b>Target :</b>	PA2GC
<b>Fields :</b>	>>Glycerophospholipid metabolism;>>Ether lipid metabolism;>>Arachidonic acid metabolism;>>Linoleic acid metabolism;>>alpha-Linolenic acid metabolism;>>Metabolic pathways;>>Ras signaling pathway;>>Vascular smooth muscle contraction;>>Pancreatic secretion;>>Fat digestion and absorption
<b>Gene Name :</b>	PLA2G2C
<b>Protein Name :</b>	PA2GC
<b>Human Swiss Prot No :</b>	Q5R387
<b>Mouse Gene Id :</b>	18781
<b>Mouse Swiss Prot No :</b>	P48076
<b>Rat Gene Id :</b>	29387
<b>Rat Swiss Prot No :</b>	P39878
<b>Immunogen :</b>	Synthesized peptide derived from human PA2GC AA range: 44-94
<b>Specificity :</b>	This antibody detects endogenous levels of PA2GC at Human/Mouse/Rat
<b>Formulation :</b>	Liquid in PBS containing 50% glycerol, 0.5% BSA and 0.02% sodium azide.
<b>Source :</b>	Polyclonal, Rabbit,IgG
<b>Dilution :</b>	WB 1[?]500-2000
<b>Purification :</b>	The antibody was affinity-purified from rabbit antiserum by affinity-

chromatography using epitope-specific immunogen.

**Concentration :** 1 mg/ml

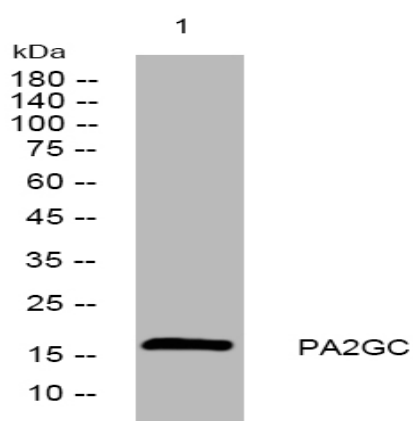
**Storage Stability :** -15°C to -25°C/1 year(Do not lower than -25°C)

**Molecularweight :** 16kD

**Function :** caution:Could be the product of a pseudogene. Lacks the typical His active site in position 68 that is replaced by a Ser residue, preventing the hydrolase activity.,cofactor: Binds 1 calcium ion per subunit.,function:Inactive phospholipase.,similarity:Belongs to the phospholipase A2 family.,

**Subcellular Location :** Secreted .

## Products Images



Western blot analysis of lysates from HeLa cells, primary antibody was diluted at 1:1000, 4° over night