

## IQCE rabbit pAb

|                              |   |
|------------------------------|---|
| <b>Catalog No :</b>          | YT7698  |
| <b>Reactivity :</b>          | Human;Mouse   |
| <b>Applications :</b>        | WB;IHC  |
| <b>Target :</b>              | IQCE  |
| <b>Fields :</b>              | >>Hedgehog signaling pathway  |
| <b>Gene Name :</b>           | IQCE KIAA1023   |
| <b>Protein Name :</b>        | IQCE  |
| <b>Human Gene Id :</b>       | 23288   |
| <b>Human Swiss Prot No :</b> | Q6IPM2  |
| <b>Mouse Gene Id :</b>       | 74239   |
| <b>Mouse Swiss Prot No :</b> | Q6PCQ0  |
| <b>Immunogen :</b>           | Synthesized peptide derived from human IQCE AA range: 50-100  |
| <b>Specificity :</b>         | This antibody detects endogenous levels of IQCE at Human/Mouse  |
| <b>Formulation :</b>         | Liquid in PBS containing 50% glycerol, 0.5% BSA and 0.02% sodium azide.   |
| <b>Source :</b>              | Polyclonal, Rabbit,IgG  |
| <b>Dilution :</b>            | WB 1:500-2000;IHC 1:50-300  |
| <b>Purification :</b>        | The antibody was affinity-purified from rabbit antiserum by affinity-chromatography using epitope-specific immunogen. |
| <b>Concentration :</b>       | 1 mg/ml   |

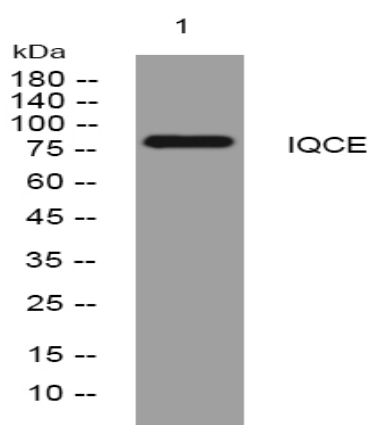
**Storage Stability :** -15°C to -25°C/1 year(Do not lower than -25°C)

**Molecularweight :** 76kD

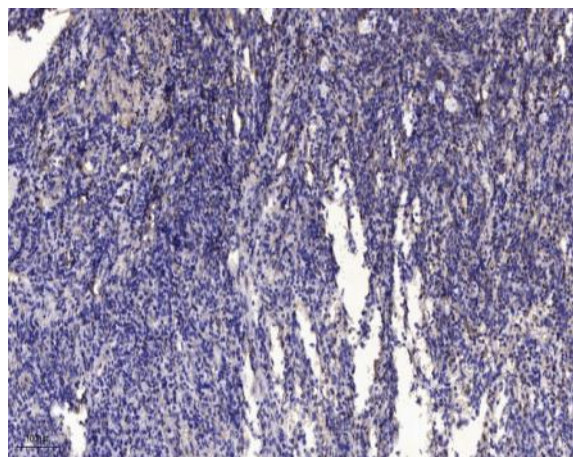
**Function :** similarity:Contains 2 IQ domains.,

**Subcellular Location :** Cell projection, cilium membrane ; Peripheral membrane protein ; Cytoplasmic side . The EvC complex localizes at the base of cilia in the EvC zone of primary cilia in a EFCAB7-dependent manner. .

## Products Images



Western blot analysis of lysates from 293T cells, primary antibody was diluted at 1:1000, 4° over night



Immunohistochemical analysis of paraffin-embedded human Gastric adenocarcinoma. 1, Antibody was diluted at 1:200(4° overnight). 2, Tris-EDTA,pH9.0 was used for antigen retrieval. 3,Secondary antibody was diluted at 1:200(room temperature, 45min).