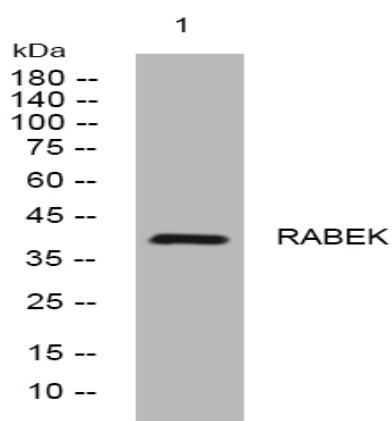


RABEK rabbit pAb

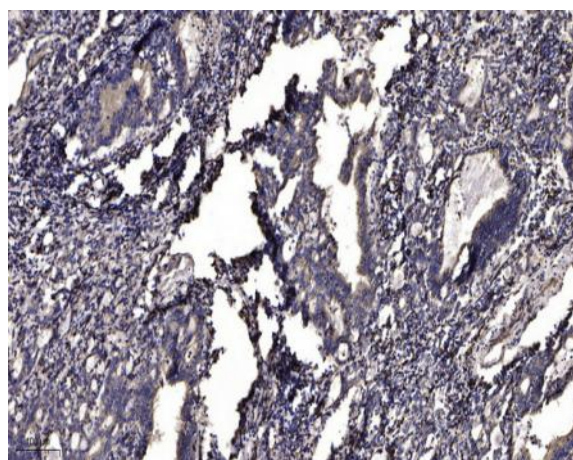
Catalog No :	YT7697
Reactivity :	Human;Mouse;Rat
Applications :	WB;ELISA;IHC
Target :	RABEK
Gene Name :	RABEPK RAB9P40
Protein Name :	RABEK
Human Gene Id :	10244
Human Swiss Prot No :	Q7Z6M1
Mouse Gene Id :	227746
Mouse Swiss Prot No :	Q8VCH5
Rat Gene Id :	296649
Rat Swiss Prot No :	Q4V8F4
Immunogen :	Synthesized peptide derived from human RABEK AA range: 227-277
Specificity :	This antibody detects endogenous levels of RABEK at Human/Mouse/Rat
Formulation :	Liquid in PBS containing 50% glycerol, 0.5% BSA and 0.02% sodium azide.
Source :	Polyclonal, Rabbit,IgG
Dilution :	WB 1:500-2000;IHC 1:50-300; ELISA 2000-20000
Purification :	The antibody was affinity-purified from rabbit antiserum by affinity-chromatography using epitope-specific immunogen.

Concentration : 1 mg/ml**Storage Stability :** -15°C to -25°C/1 year(Do not lower than -25°C)**Molecularweight :** 41kD**Function :** function:Rab9 effector required for endosome to trans-Golgi network (TGN) transport.,PTM:Phosphorylated on Ser residues most probably by PIP5K3.,similarity:Contains 5 Kelch repeats.,subcellular location:Interaction with PIP5K3 and subsequent phosphorylation recruits it to the endosomal membrane.,subunit:Interacts with PIP5K3. Interacts with RAB9 in its GTP-bound conformation.,**Subcellular Location :** Cytoplasm. Endosome membrane . Interaction with PIKFYVE and subsequent phosphorylation recruits it to the endosomal membrane. .

Products Images



Western blot analysis of lysates from MCF-7 cells, primary antibody was diluted at 1:1000, 4° over night



Immunohistochemical analysis of paraffin-embedded human Gastric adenocarcinoma. 1, Antibody was diluted at 1:200(4° overnight). 2, Tris-EDTA,pH9.0 was used for antigen retrieval. 3,Secondary antibody was diluted at 1:200(room temperature, 45min).