

PRD14 rabbit pAb

Catalog No :	YT7691
Reactivity :	Human;Mouse
Applications :	WB;IHC
Target :	PRD14
Gene Name :	PRDM14
Protein Name :	PRD14
Human Gene Id :	63978
Human Swiss Prot No :	Q9GZV8
Mouse Gene Id :	383491
Mouse Swiss Prot No :	E9Q3T6
Immunogen :	Synthesized peptide derived from human PRD14 AA range: 391-441
Specificity :	This antibody detects endogenous levels of PRD14 at Human/Mouse
Formulation :	Liquid in PBS containing 50% glycerol, 0.5% BSA and 0.02% sodium azide.
Source :	Polyclonal, Rabbit,IgG
Dilution :	WB 1:500-2000;IHC 1:50-300
Purification :	The antibody was affinity-purified from rabbit antiserum by affinity-chromatography using epitope-specific immunogen.
Concentration :	1 mg/ml
Storage Stability :	-15°C to -25°C/1 year(Do not lower than -25°C)

Molecularweight : 63kD

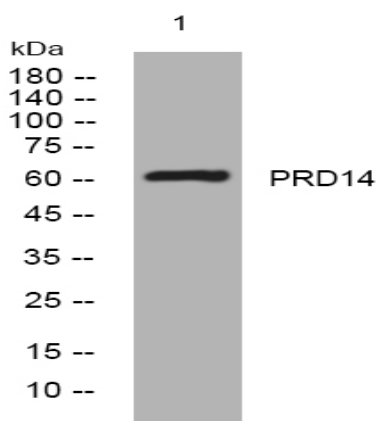
Background : This gene encodes a member of the PRDI-BF1 and RIZ homology domain containing (PRDM) family of transcriptional regulators. The encoded protein may possess histone methyltransferase activity and plays a critical role in cell pluripotency by suppressing the expression of differentiation marker genes. Expression of this gene may play a role in breast cancer. [provided by RefSeq, Dec 2011],

Function : function:May be involved in transcriptional regulation.,similarity:Contains 1 SET domain.,similarity:Contains 6 C2H2-type zinc fingers.,

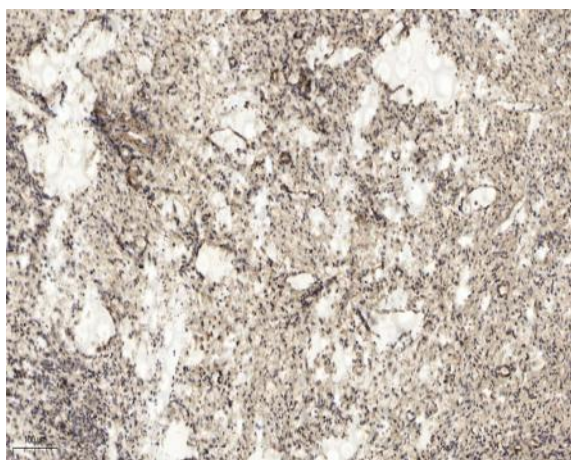
Subcellular Location : Nucleus .

Expression : Expressed in embryonic stem cells. Tends to be overexpressed in breast cancer (at protein level).

Products Images



Western blot analysis of lysates from HuvEc cells, primary antibody was diluted at 1:1000, 4° over night



Immunohistochemical analysis of paraffin-embedded human oophoroma. 1, Antibody was diluted at 1:200(4° overnight). 2, Tris-EDTA,pH9.0 was used for antigen retrieval. 3,Secondary antibody was diluted at 1:200(room temperature, 45min).