

S35B4 rabbit pAb

Catalog No :	YT7688
Reactivity :	Human;Mouse
Applications :	WB
Target :	S35B4
Gene Name :	SLC35B4 YEA4 PSEC0055
Protein Name :	S35B4
Human Gene Id :	84912
Human Swiss Prot No :	Q969S0
Mouse Gene Id :	58246
Mouse Swiss Prot No :	Q8CIA5
Immunogen :	Synthesized peptide derived from human S35B4 AA range: 193-243
Specificity :	This antibody detects endogenous levels of S35B4 at Human/Mouse
Formulation :	Liquid in PBS containing 50% glycerol, 0.5% BSA and 0.02% sodium azide.
Source :	Polyclonal, Rabbit,IgG
Dilution :	WB 1[?]500-2000
Purification :	The antibody was affinity-purified from rabbit antiserum by affinity-chromatography using epitope-specific immunogen.
Concentration :	1 mg/ml
Storage Stability :	-15°C to -25°C/1 year(Do not lower than -25°C)

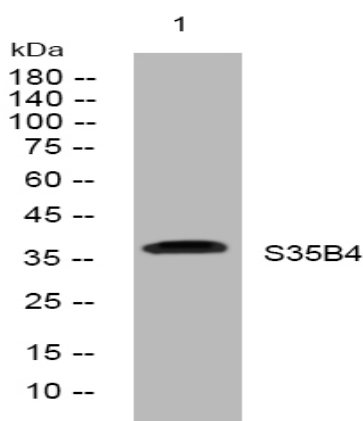
Molecularweight : 36kD

Background : Glycosyltransferases, such as SLC35B4, transport nucleotide sugars from the cytoplasm where they are synthesized, to the Golgi apparatus where they are utilized in the synthesis of glycoproteins, glycolipids, and proteoglycans (Ashikov et al., 2005 [PubMed 15911612]).[supplied by OMIM, Mar 2008],

Function : function: Sugar transporter that specifically mediates the transport of UDP-xylose (UDP-Xyl) and UDP-N-acetylglucosamine (UDP-GlcNAc) from cytosol into Golgi.,online information:GlycoGene database,similarity:Belongs to the nucleotide-sugar transporter family. SLC35B subfamily.,

Subcellular Location : Golgi apparatus membrane ; Multi-pass membrane protein .

Products Images



Western blot analysis of lysates from MDA-MB cells, primary antibody was diluted at 1:1000, 4° over night