

## GPN1 rabbit pAb

<b>Catalog No :</b>	YT7679
<b>Reactivity :</b>	Human;Mouse
<b>Applications :</b>	WB
<b>Target :</b>	GPN1
<b>Gene Name :</b>	GPN1 MBDIN XAB1 HUSSY-23
<b>Protein Name :</b>	GPN1
<b>Human Gene Id :</b>	11321
<b>Human Swiss Prot No :</b>	Q9HCN4
<b>Mouse Gene Id :</b>	74254
<b>Mouse Swiss Prot No :</b>	Q8VCE2
<b>Immunogen :</b>	Synthesized peptide derived from human GPN1 AA range: 24-74
<b>Specificity :</b>	This antibody detects endogenous levels of GPN1 at Human/Mouse
<b>Formulation :</b>	Liquid in PBS containing 50% glycerol, 0.5% BSA and 0.02% sodium azide.
<b>Source :</b>	Polyclonal, Rabbit,IgG
<b>Dilution :</b>	WB 1:500-2000
<b>Purification :</b>	The antibody was affinity-purified from rabbit antiserum by affinity-chromatography using epitope-specific immunogen.
<b>Concentration :</b>	1 mg/ml
<b>Storage Stability :</b>	-15°C to -25°C/1 year(Do not lower than -25°C)

**Molecularweight :** 41kD

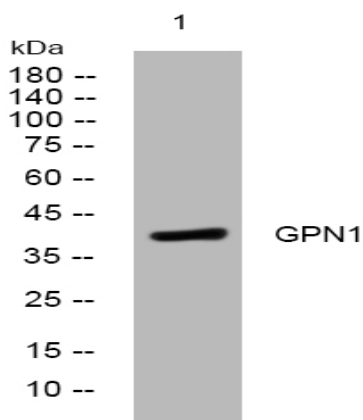
**Background :** This gene encodes a guanosine triphosphatase enzyme. The encoded protein may play a role in DNA repair and may function in activation of transcription. Alternatively spliced transcript variants have been described. [provided by RefSeq, Feb 2009],

**Function :** caution:The sequence shown here is derived from an Ensembl automatic analysis pipeline and should be considered as preliminary data.,function:Forms an interface between the RNA polymerase II enzyme and chaperone/scaffolding protein, suggesting that it is required to connect RNA polymerase II to regulators of protein complex formation. May be involved in nuclear localization of XPA.,similarity:Belongs to the GPN-loop GTPase family.,subunit:Tightly associated with the RNA polymerase II complex. Interacts with XPA.,tissue specificity:Expressed ubiquitously.,

**Subcellular Location :** Cytoplasm . Nucleus . Shuttles between the nucleus and the cytoplasm. .

**Expression :** Expressed ubiquitously.

## Products Images



Western blot analysis of lysates from HeLa cells, primary antibody was diluted at 1:1000, 4° over night