

## KRA63 rabbit pAb

<b>Catalog No :</b>	YT7677
<b>Reactivity :</b>	Human
<b>Applications :</b>	IHC;IF
<b>Target :</b>	KRA63
<b>Gene Name :</b>	KRTAP6-3 KAP6.3
<b>Protein Name :</b>	KRA63
<b>Human Swiss Prot No :</b>	Q3LI67
<b>Immunogen :</b>	Synthesized peptide derived from human KRA63 AA range: 48-98
<b>Specificity :</b>	This antibody detects endogenous levels of KRA63 at Human
<b>Formulation :</b>	Liquid in PBS containing 50% glycerol, 0.5% BSA and 0.02% sodium azide.
<b>Source :</b>	Polyclonal, Rabbit,IgG
<b>Dilution :</b>	IHC 1:50-200. IF 1:50-200
<b>Purification :</b>	The antibody was affinity-purified from rabbit antiserum by affinity-chromatography using epitope-specific immunogen.
<b>Concentration :</b>	1 mg/ml
<b>Storage Stability :</b>	-15°C to -25°C/1 year(Do not lower than -25°C)
<b>Molecularweight :</b>	11kD
<b>Function :</b>	function:In the hair cortex, hair keratin intermediate filaments are embedded in an interfilamentous matrix, consisting of hair keratin-associated proteins (KRTAP), which are essential for the formation of a rigid and resistant hair shaft through their extensive disulfide bond cross-linking with abundant cysteine residues of hair keratins. The matrix proteins include the high-sulfur and high-

glycine-tyrosine keratins.,similarity:Belongs to the KRTAP type 6 family.,subunit:Interacts with hair keratins.,

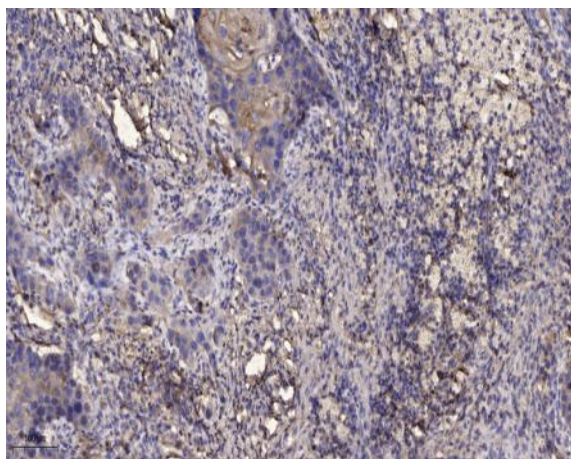
---

**Subcellular  
Location :**

intermediate filament,

---

## Products Images



Immunohistochemical analysis of paraffin-embedded human Squamous cell carcinoma of lung. 1, Antibody was diluted at 1:200(4° overnight). 2, Tris-EDTA,pH9.0 was used for antigen retrieval. 3,Secondary antibody was diluted at 1:200(room temperature, 45min).