

PP2B-A α rabbit pAb

| | |
|------------------------------|---|
| Catalog No : | YT7821 |
| Reactivity : | Human;Mouse;Rat |
| Applications : | WB;IHC |
| Target : | PP2B-A α |
| Fields : | >>MAPK signaling pathway;>>Calcium signaling pathway;>>cGMP-PKG signaling pathway;>>Oocyte meiosis;>>Cellular senescence;>>Wnt signaling pathway;>>Axon guidance;>>VEGF signaling pathway;>>Osteoclast differentiation;>>C-type lectin receptor signaling pathway;>>Natural killer cell mediated cytotoxicity;>>Th1 and Th2 cell differentiation;>>Th17 cell differentiation;>>T cell receptor signaling pathway;>>B cell receptor signaling pathway;>>Long-term potentiation;>>Glutamatergic synapse;>>Dopaminergic synapse;>>Oxytocin signaling pathway;>>Glucagon signaling pathway;>>Renin secretion;>>Alzheimer disease;>>Amyotrophic lateral sclerosis;>>Prion disease;>>Pathways of neurodegeneration - multiple diseases;>>Amphetamine addiction;>>Tuberculosis;>>Human cytomegalovirus infection;>>Human T-cell leukemia virus 1 infection;>>Kaposi sarcoma-associated herpesvirus infection;>>Human immunodeficiency virus 1 infection;>>PD-L1 expression and PD-1 checkpoint pathway in cancer;>>Lipid and atherosclerosis |
| Gene Name : | PPP3CA CALNA CNA |
| Protein Name : | PP2B-A α |
| Human Gene Id : | 5530 |
| Human Swiss Prot No : | Q08209 |
| Mouse Gene Id : | 19055 |
| Mouse Swiss Prot No : | P63328 |
| Rat Gene Id : | 24674 |
| Rat Swiss Prot No : | P63329 |

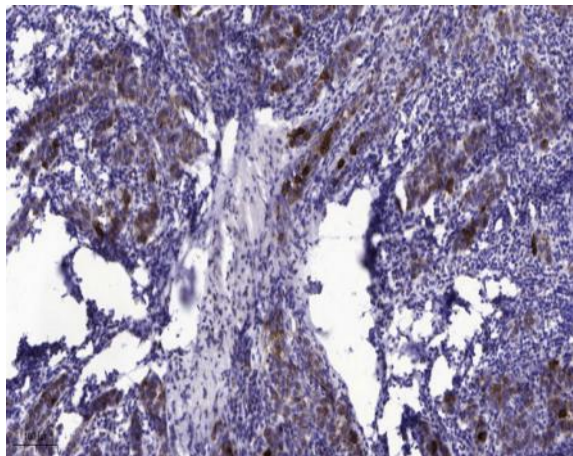
| | |
|-------------------------------|--|
| Immunogen : | Synthesized peptide derived from human PP2B-A α |
| Specificity : | This antibody detects endogenous levels of Human, Mouse, Rat PP2B-A α |
| Formulation : | Liquid in PBS containing 50% glycerol, 0.5% BSA and 0.02% sodium azide. |
| Source : | Polyclonal, Rabbit, IgG |
| Dilution : | WB 1:500-2000; IHC 1:50-300 |
| Purification : | The antibody was affinity-purified from rabbit antiserum by affinity-chromatography using epitope-specific immunogen. |
| Concentration : | 1 mg/ml |
| Storage Stability : | -15°C to -25°C/1 year (Do not lower than -25°C) |
| Molecular weight : | 57kD |
| Background : | <p>catalytic activity: A phosphoprotein + H₂O = a protein + phosphate., cofactor: Binds 1 Fe(3+) ion per subunit., cofactor: Binds 1 zinc ion per subunit., function: Calcium-dependent, calmodulin-stimulated protein phosphatase. This subunit may have a role in the calmodulin activation of calcineurin. Dephosphorylates HSPB1 and SSH1., online information: Calcineurin entry, similarity: Belongs to the PPP phosphatase family., similarity: Belongs to the PPP phosphatase family. PP-2B subfamily., subcellular location: Colocalizes with ACTN1 and MYOZ2 at the Z line in heart and skeletal muscle., subunit: Composed of two components (A and B), the A component is the catalytic subunit and the B component confers calcium sensitivity. Interacts with TORC2/CRTC2, MYOZ1, MYOZ2 and MYOZ3.,</p> |
| Function : | <p>catalytic activity: A phosphoprotein + H₂O = a protein + phosphate., cofactor: Binds 1 Fe(3+) ion per subunit., cofactor: Binds 1 zinc ion per subunit., function: Calcium-dependent, calmodulin-stimulated protein phosphatase. This subunit may have a role in the calmodulin activation of calcineurin. Dephosphorylates HSPB1 and SSH1., online information: Calcineurin entry, similarity: Belongs to the PPP phosphatase family., similarity: Belongs to the PPP phosphatase family. PP-2B subfamily., subcellular location: Colocalizes with ACTN1 and MYOZ2 at the Z line in heart and skeletal muscle., subunit: Composed of two components (A and B), the A component is the catalytic subunit and the B component confers calcium sensitivity. Interacts with TORC2/CRTC2, MYOZ1, MYOZ2 and MYOZ3.,</p> |
| Subcellular Location : | Cytoplasm . Cell membrane ; Peripheral membrane protein . Cell membrane, sarcolemma . Cytoplasm, myofibril, sarcomere, Z line . Cell projection, dendritic spine . Colocalizes with ACTN1 and MYOZ2 at the Z line in heart and skeletal |

muscle (By similarity). Recruited to the cell membrane by scaffold protein AKAP5 following L-type Ca^{2+} -channel activation (PubMed:22343722). .

Expression :

Expressed in keratinocytes (at protein level) (PubMed:29043977). Expressed in lymphoblasts (at protein level) (PubMed:30254215).

Products Images



Immunohistochemical analysis of paraffin-embedded human Breast cancer. 1, Antibody was diluted at 1:200(4° overnight). 2, Tris-EDTA,pH9.0 was used for antigen retrieval. 3,Secondary antibody was diluted at 1:200(room temperature, 45min).