

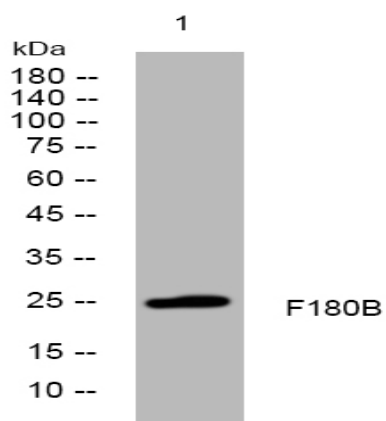
**F180B rabbit pAb**

<b>Catalog No :</b>	YT7668
<b>Reactivity :</b>	Human
<b>Applications :</b>	WB
<b>Target :</b>	F180B
<b>Gene Name :</b>	FAM180B
<b>Protein Name :</b>	F180B
<b>Human Gene Id :</b>	399888
<b>Human Swiss Prot No :</b>	Q6P0A1
<b>Immunogen :</b>	Synthesized peptide derived from human F180B AA range: 8-58
<b>Specificity :</b>	This antibody detects endogenous levels of F180B at Human
<b>Formulation :</b>	Liquid in PBS containing 50% glycerol, 0.5% BSA and 0.02% sodium azide.
<b>Source :</b>	Polyclonal, Rabbit,IgG
<b>Dilution :</b>	WB 1[?]500-2000
<b>Purification :</b>	The antibody was affinity-purified from rabbit antiserum by affinity-chromatography using epitope-specific immunogen.
<b>Concentration :</b>	1 mg/ml
<b>Storage Stability :</b>	-15 °C to -25 °C/1 year(Do not lower than -25 °C)
<b>Molecularweight :</b>	25kD
<b>Function :</b>	similarity:Belongs to the FAM180 family.,

**Subcellular  
Location :**

Secreted .

## Products Images



Western blot analysis of lysates from AD293 cells, primary antibody was diluted at 1:1000, 4° over night