

## ABR rabbit pAb

<b>Catalog No :</b>	YT7664
<b>Reactivity :</b>	Human;Mouse
<b>Applications :</b>	WB
<b>Target :</b>	ABR
<b>Gene Name :</b>	ABR
<b>Protein Name :</b>	ABR
<b>Human Gene Id :</b>	29
<b>Human Swiss Prot No :</b>	Q12979
<b>Mouse Gene Id :</b>	109934
<b>Mouse Swiss Prot No :</b>	Q5SSL4
<b>Immunogen :</b>	Synthesized peptide derived from human ABR AA range: 393-443
<b>Specificity :</b>	This antibody detects endogenous levels of ABR at Human/Mouse
<b>Formulation :</b>	Liquid in PBS containing 50% glycerol, 0.5% BSA and 0.02% sodium azide.
<b>Source :</b>	Polyclonal, Rabbit,IgG
<b>Dilution :</b>	WB 1:500-2000
<b>Purification :</b>	The antibody was affinity-purified from rabbit antiserum by affinity-chromatography using epitope-specific immunogen.
<b>Concentration :</b>	1 mg/ml
<b>Storage Stability :</b>	-15°C to -25°C/1 year(Do not lower than -25°C)

**Molecularweight :** 94kD

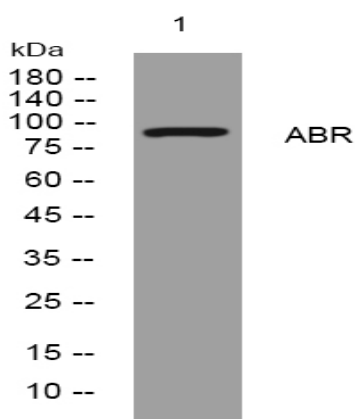
**Background :** This gene encodes a protein that is similar to the protein encoded by the breakpoint cluster region gene located on chromosome 22. The protein encoded by this gene contains a GTPase-activating protein domain, a domain found in members of the Rho family of GTP-binding proteins. Functional studies in mice determined that this protein plays a role in vestibular morphogenesis. Alternatively spliced transcript variants have been reported for this gene. [provided by RefSeq, Feb 2012],

**Function :** function:GTPase-activating protein for RAC and CDC42. Promotes the exchange of RAC or CDC42-bound GDP by GTP, thereby activating them.,similarity:Contains 1 C2 domain.,similarity:Contains 1 DH (DBL-homology) domain.,similarity:Contains 1 PH domain.,similarity:Contains 1 Rho-GAP domain.,tissue specificity:Highly enriched in the brain. Much weaker expression in heart, lung and muscle.,

**Subcellular Location :** Cell projection, dendritic spine . Cell projection, axon . Cell junction, synapse .

**Expression :** Highly enriched in the brain. Much weaker expression in heart, lung and muscle.

## Products Images



Western blot analysis of lysates from HeLa cells, primary antibody was diluted at 1:1000, 4° over night