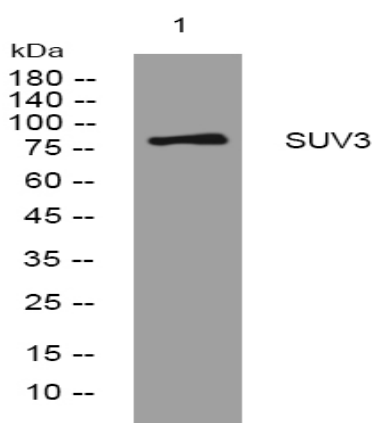


SUV3 rabbit pAb

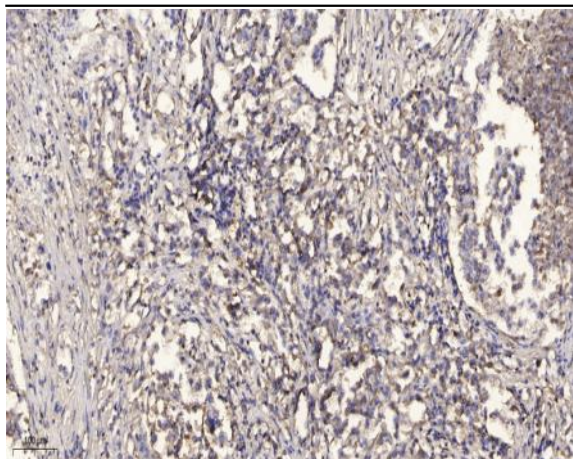
Catalog No :	YT7651
Reactivity :	Human;Mouse;Rat
Applications :	WB;ELISA;IHC
Target :	SUV3
Gene Name :	SUPV3L1 SUV3
Protein Name :	SUV3
Human Gene Id :	6832
Human Swiss Prot No :	Q8IYB8
Mouse Gene Id :	338359
Mouse Swiss Prot No :	Q80YD1
Rat Gene Id :	294385
Rat Swiss Prot No :	Q5EBA1
Immunogen :	Synthesized peptide derived from human SUV3 AA range: 443-493
Specificity :	This antibody detects endogenous levels of SUV3 at Human/Mouse/Rat
Formulation :	Liquid in PBS containing 50% glycerol, 0.5% BSA and 0.02% sodium azide.
Source :	Polyclonal, Rabbit,IgG
Dilution :	WB 1:500-2000;IHC 1:50-300; ELISA 2000-20000
Purification :	The antibody was affinity-purified from rabbit antiserum by affinity-chromatography using epitope-specific immunogen.

Concentration :	1 mg/ml
Storage Stability :	-15°C to -25°C/1 year(Do not lower than -25°C)
Molecularweight :	86kD
Function :	cofactor:Magnesium or manganese.,enzyme regulation:Helicase activity toward DNA substrate is inhibited by micromolar concentrations of 5,6-dichloro-1-(beta-D-ribofuranosyl)benzotriazole (DRBT) and 4,5,6,7-tetrabromobenzotriazole (TBBT). Helicase activity toward RNA substrate is inhibited by elevated concentrations of TBBT. Inhibited by some ring-expanded nucleoside analogs.,function:ATPase and DNA/RNA helicase able to unwind DNA/DNA, DNA/RNA and RNA/RNA duplexes in the 5'-3' direction. May protect cells from apoptosis.,similarity:Belongs to the helicase family.,similarity:Contains 1 helicase ATP-binding domain.,similarity:Contains 1 helicase C-terminal domain.,subunit:Interacts with HBXIP.,tissue specificity:Broadly expressed.,
Subcellular Location :	Nucleus . Mitochondrion matrix . Mitochondrion matrix, mitochondrion nucleoid .
Expression :	Broadly expressed.

Products Images



Western blot analysis of lysates from MDA-MB cells, primary antibody was diluted at 1:1000, 4° over night



Immunohistochemical analysis of paraffin-embedded human Squamous cell carcinoma of lung. 1, Antibody was diluted at 1:200(4° overnight). 2, Tris-EDTA,pH9.0 was used for antigen retrieval. 3,Secondary antibody was diluted at 1:200(room temperature, 45min).