

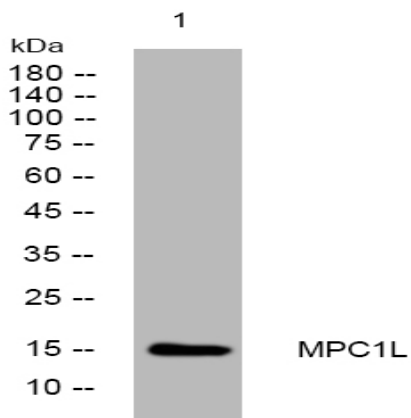
MPC1L rabbit pAb

| | |
|------------------------------|---|
| Catalog No : | YT7650 |
| Reactivity : | Human |
| Applications : | WB;ELISA;IHC |
| Target : | MPC1L |
| Fields : | >>Diabetic cardiomyopathy |
| Gene Name : | MPC1L |
| Protein Name : | MPC1L |
| Human Gene Id : | 347411 |
| Human Swiss Prot No : | P0DKB6 |
| Immunogen : | Synthesized peptide derived from human MPC1L AA range: 63-113 |
| Specificity : | This antibody detects endogenous levels of MPC1L at Human |
| Formulation : | Liquid in PBS containing 50% glycerol, 0.5% BSA and 0.02% sodium azide. |
| Source : | Polyclonal, Rabbit,IgG |
| Dilution : | WB 1:500-2000;IHC 1:50-300; ELISA 2000-20000 |
| Purification : | The antibody was affinity-purified from rabbit antiserum by affinity-chromatography using epitope-specific immunogen. |
| Concentration : | 1 mg/ml |
| Storage Stability : | -15°C to -25°C/1 year(Do not lower than -25°C) |
| Molecularweight : | 15kD |

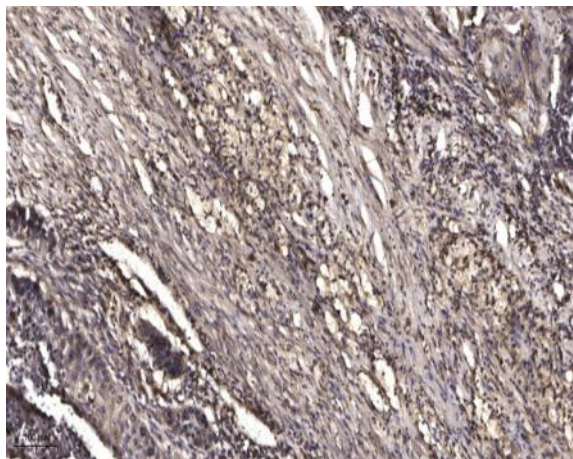
**Subcellular
Location :**

Membrane ; Multi-pass membrane protein .

Products Images



Western blot analysis of lysates from SW480 cells, primary antibody was diluted at 1:1000, 4° over night



Immunohistochemical analysis of paraffin-embedded human Squamous cell carcinoma of lung. 1, Antibody was diluted at 1:200(4° overnight). 2, Tris-EDTA,pH9.0 was used for antigen retrieval. 3,Secondary antibody was diluted at 1:200(room temperature, 45min).