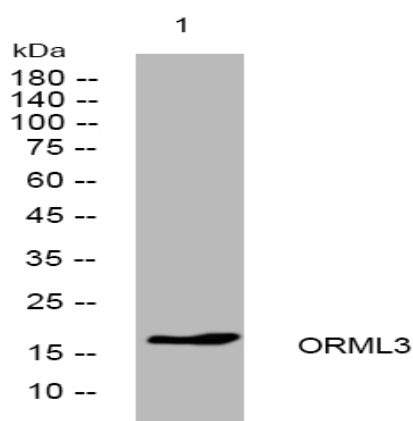


ORML3 rabbit pAb

Catalog No :	YT7649
Reactivity :	Human;Mouse;Rat
Applications :	WB
Target :	ORML3
Gene Name :	ORMDL3
Protein Name :	ORML3
Human Gene Id :	94103
Human Swiss Prot No :	Q8N138
Mouse Gene Id :	66612
Mouse Swiss Prot No :	Q9CPZ6
Rat Gene Id :	360618
Rat Swiss Prot No :	Q6QI25
Immunogen :	Synthesized peptide derived from human ORML3 AA range: 98-148
Specificity :	This antibody detects endogenous levels of ORML3 at Human/Mouse/Rat
Formulation :	Liquid in PBS containing 50% glycerol, 0.5% BSA and 0.02% sodium azide.
Source :	Polyclonal, Rabbit,IgG
Dilution :	WB 1:500-2000
Purification :	The antibody was affinity-purified from rabbit antiserum by affinity-chromatography using epitope-specific immunogen.

Concentration :	1 mg/ml
Storage Stability :	-15°C to -25°C/1 year(Do not lower than -25°C)
Molecularweight :	17kD
Function :	similarity:Belongs to the ORM family.,tissue specificity:Widely expressed. Expressed in adult and fetal heart, brain, lung, liver, skeletal muscle and kidney. Expressed in adult pancreas and placenta and in fetal spleen abd thymus.,
Subcellular Location :	Endoplasmic reticulum membrane ; Multi-pass membrane protein .
Expression :	Widely expressed. Expressed in adult and fetal heart, brain, lung, liver, skeletal muscle and kidney. Expressed in adult pancreas and placenta and in fetal spleen abd thymus.

Products Images



Western blot analysis of lysates from CACO2 cells, primary antibody was diluted at 1:1000, 4° over night