

CLDN1 rabbit pAb

Catalog No :	YT7648
Reactivity :	Human;Mouse
Applications :	WB
Target :	CLDN1
Gene Name :	CLDND1 C3orf4 HSPC174 PSEC0054 UNQ2511/PRO6000
Protein Name :	CLDN1
Human Gene Id :	56650
Human Swiss Prot No :	Q9NY35
Mouse Gene Id :	224250
Mouse Swiss Prot No :	Q9CQX5
Immunogen :	Synthesized peptide derived from human CLDN1 AA range: 33-83
Specificity :	This antibody detects endogenous levels of CLDN1 at Human/Mouse
Formulation :	Liquid in PBS containing 50% glycerol, 0.5% BSA and 0.02% sodium azide.
Source :	Polyclonal, Rabbit,IgG
Dilution :	WB 1:500-2000
Purification :	The antibody was affinity-purified from rabbit antiserum by affinity-chromatography using epitope-specific immunogen.
Concentration :	1 mg/ml
Storage Stability :	-15°C to -25°C/1 year(Do not lower than -25°C)

Molecularweight : 28kD

Function :

caution:The sequence shown here is derived from an Ensembl automatic analysis pipeline and should be considered as preliminary data.,similarity:Belongs to the PMP-22/EMP/MP20 family.,tissue specificity:Widely distributed in the adult CNS with highest expression in the corpus callosum, caudate nucleus, cerebral cortex, medulla, putamen, spinal cord, substantia nigra and subthalamic nucleus. Weak expression was detected in the adult heart.,

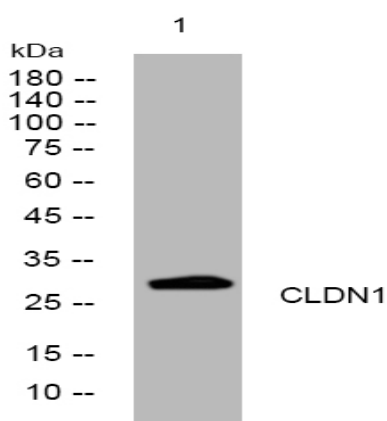
Subcellular Location :

Membrane ; Multi-pass membrane protein .

Expression :

Widely distributed in the adult CNS with highest expression in the corpus callosum, caudate nucleus, cerebral cortex, medulla, putamen, spinal cord, substantia nigra and subthalamic nucleus. Weak expression was detected in the adult heart.

Products Images



Western blot analysis of lysates from DU145 cells, primary antibody was diluted at 1:1000, 4° over night