

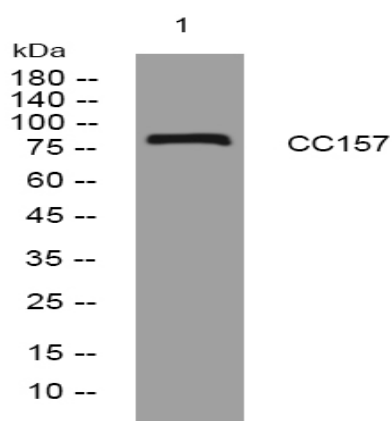
CC157 rabbit pAb

Catalog No :	YT7647
Reactivity :	Human;Mouse
Applications :	WB
Target :	CC157
Gene Name :	CCDC157 KIAA1656
Protein Name :	CC157
Human Gene Id :	550631
Human Swiss Prot No :	Q569K6
Mouse Gene Id :	216516
Mouse Swiss Prot No :	Q5SPX1
Immunogen :	Synthesized peptide derived from human CC157 AA range: 16-66
Specificity :	This antibody detects endogenous levels of CC157 at Human/Mouse
Formulation :	Liquid in PBS containing 50% glycerol, 0.5% BSA and 0.02% sodium azide.
Source :	Polyclonal, Rabbit,IgG
Dilution :	WB 1:500-2000
Purification :	The antibody was affinity-purified from rabbit antiserum by affinity-chromatography using epitope-specific immunogen.
Concentration :	1 mg/ml
Storage Stability :	-15°C to -25°C/1 year(Do not lower than -25°C)

Molecularweight : 83kD

Function : sequence caution:Intron retention. This sequence is incomplete at the 5'- and 3'-ends and extensively differs from that shown due to multiple introns.,

Products Images



Western blot analysis of lysates from U2OS cells, primary antibody was diluted at 1:1000, 4° over night