

PEX5R rabbit pAb

Catalog No :	YT7634
Reactivity :	Human;Mouse;Rat
Applications :	WB;IHC
Target :	PEX5R
Fields :	>>Peroxisome
Gene Name :	PEX5L PEX5R PXR2
Protein Name :	PEX5R
Human Gene Id :	51555
Human Swiss Prot No :	Q8IYB4
Mouse Gene Id :	58869
Mouse Swiss Prot No :	Q8C437
Rat Gene Id :	286937
Rat Swiss Prot No :	Q925N3
Immunogen :	Synthesized peptide derived from human PEX5R AA range: 267-317
Specificity :	This antibody detects endogenous levels of PEX5R at Human/Mouse/Rat
Formulation :	Liquid in PBS containing 50% glycerol, 0.5% BSA and 0.02% sodium azide.
Source :	Polyclonal, Rabbit,IgG
Dilution :	WB 1:500-2000;IHC 1:50-300
Purification :	The antibody was affinity-purified from rabbit antiserum by affinity-

chromatography using epitope-specific immunogen.

Concentration : 1 mg/ml

Storage Stability : -15°C to -25°C/1 year (Do not lower than -25°C)

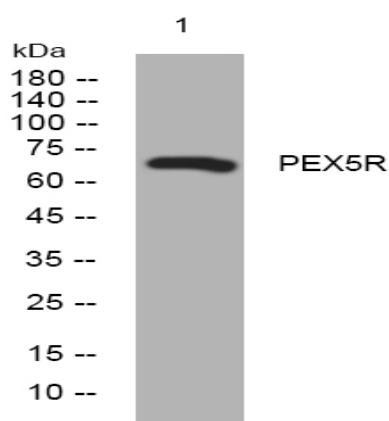
Molecularweight : 69kD

Function : similarity:Belongs to the peroxisomal targeting signal receptor family.,similarity:Contains 5 TPR repeats.,subcellular location:Some fraction is membrane associated via its interaction with RAB8B.,subunit:Interacts with RAB8B (By similarity). May interact with the C-terminal PTS1-type tripeptide peroxisomal targeting signal (SKL-type); the relevance of such interaction is however unclear.,tissue specificity:Mainly expressed in brain. Also expressed in pancreas, testis and pituitary.,

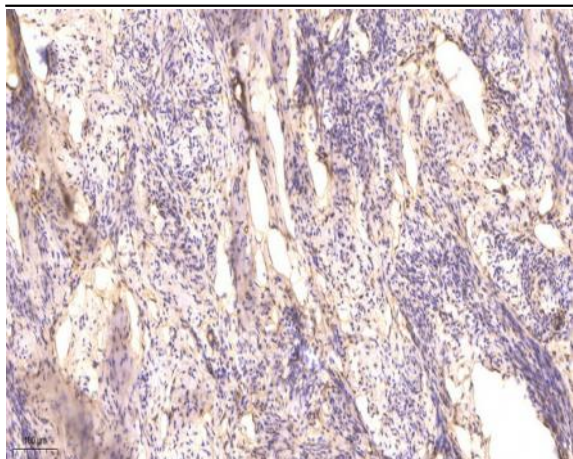
Subcellular Location : Cytoplasm . Membrane ; Peripheral membrane protein . Some fraction is membrane associated via its interaction with RAB8B. .

Expression : Mainly expressed in brain. Also expressed in pancreas, testis and pituitary.

Products Images



Western blot analysis of lysates from HeLa cells, primary antibody was diluted at 1:1000, 4° over night



Immunohistochemical analysis of paraffin-embedded human cervical carcinoma. 1, Antibody was diluted at 1:200(4° overnight). 2, Tris-EDTA,pH9.0 was used for antigen retrieval. 3,Secondary antibody was diluted at 1:200(room temperature, 45min).