

KNTC1 rabbit pAb

Catalog No :	YT7630
Reactivity :	Human;Mouse
Applications :	WB;ELISA;IHC
Target :	KNTC1
Gene Name :	KNTC1 KIAA0166
Protein Name :	KNTC1
Human Gene Id :	9735
Human Swiss Prot No :	P50748
Mouse Gene Id :	208628
Mouse Swiss Prot No :	Q8C3Y4
Immunogen :	Synthesized peptide derived from human KNTC1 AA range: 1343-1393
Specificity :	This antibody detects endogenous levels of KNTC1 at Human/Mouse
Formulation :	Liquid in PBS containing 50% glycerol, 0.5% BSA and 0.02% sodium azide.
Source :	Polyclonal, Rabbit,IgG
Dilution :	WB 1:500-2000;IHC 1:50-300; ELISA 2000-20000
Purification :	The antibody was affinity-purified from rabbit antiserum by affinity-chromatography using epitope-specific immunogen.
Concentration :	1 mg/ml
Storage Stability :	-15°C to -25°C/1 year(Do not lower than -25°C)

Molecularweight : 243kD

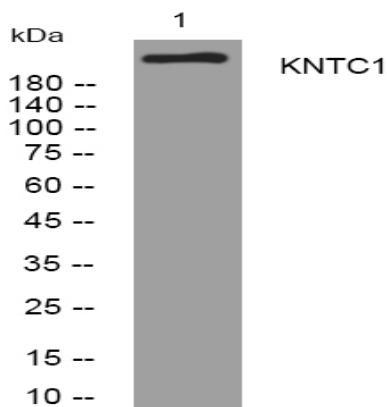
Background : This gene encodes a protein that is one of many involved in mechanisms to ensure proper chromosome segregation during cell division. Experimental evidence indicated that the encoded protein functioned in a similar manner to that of the Drosophila rough deal protein. [provided by RefSeq, Jul 2008],

Function : function:Essential component of the mitotic checkpoint, which prevents cells from prematurely exiting mitosis. Required for the assembly of the dynein-dynactin and MAD1-MAD2 complexes onto kinetochores.,subcellular location:Dynamic pattern of localization during the cell cycle. At interphase, uniformly distributed throughout the cytoplasm and nucleus. By prophase and until late stages of prometaphase, a fraction of the total pool is concentrated at kinetochores. By metaphase, detected at kinetochores, along spindle fibers and most prominently at the poles. By late anaphase until the end of telophase, no longer detectable on kinetochores or along spindle fibers, but still present at the spindle poles.,subunit:Interacts with ZW10. This interaction is required for stable association with the kinetochore. Component of the RZZ complex composed of KNTC1/ROD, ZW10 and ZWILCH.,tissue specificity

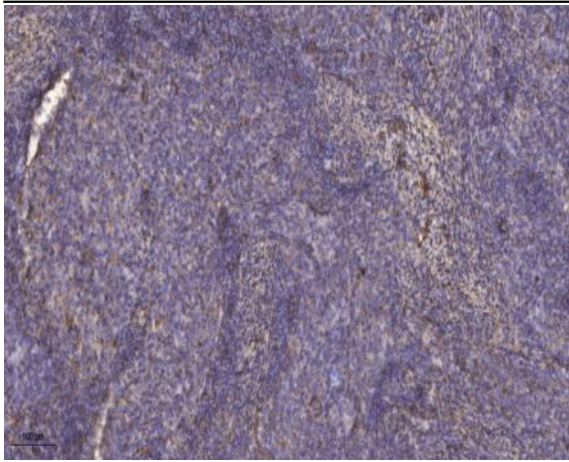
Subcellular Location : Cytoplasm. Nucleus. Chromosome, centromere, kinetochore. Cytoplasm, cytoskeleton, spindle. Dynamic pattern of localization during the cell cycle. At interphase, uniformly distributed throughout the cytoplasm and nucleus. By prophase and until late stages of prometaphase, a fraction of the total pool is concentrated at kinetochores. By metaphase, detected at kinetochores, along spindle fibers and most prominently at the poles. By late anaphase until the end of telophase, no longer detectable on kinetochores or along spindle fibers, but still present at the spindle poles.

Expression : High expression in testis.

Products Images



Western blot analysis of lysates from MCF-7 cells, primary antibody was diluted at 1:1000, 4° over night



Immunohistochemical analysis of paraffin-embedded human cervical carcinoma. 1, Antibody was diluted at 1:200(4° overnight). 2, Tris-EDTA,pH9.0 was used for antigen retrieval. 3,Secondary antibody was diluted at 1:200(room temperature, 45min).