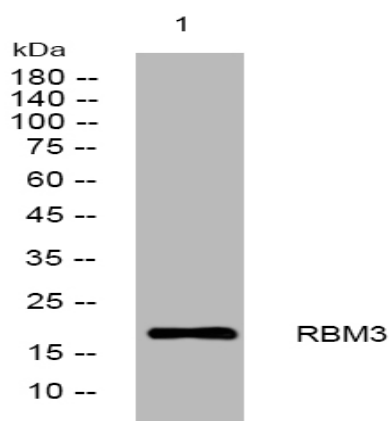


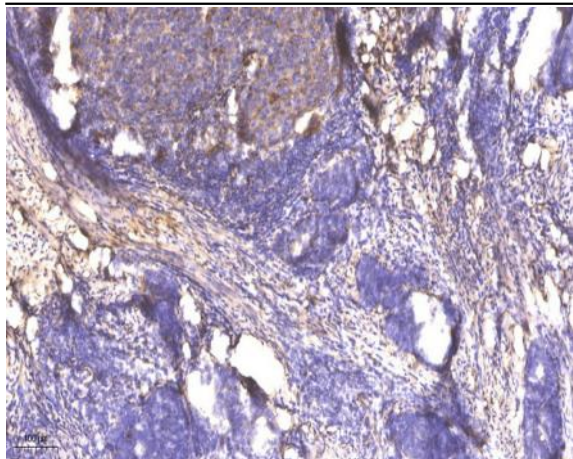
RBM3 rabbit pAb

Catalog No :	YT7772
Reactivity :	Human;Mouse;Rat
Applications :	WB;IHC
Target :	RBM3
Gene Name :	RBM3 RNPL
Protein Name :	RBM3
Human Gene Id :	5935
Human Swiss Prot No :	P98179
Mouse Gene Id :	19652
Mouse Swiss Prot No :	O89086
Rat Gene Id :	114488
Rat Swiss Prot No :	Q925G0
Immunogen :	Synthesized peptide derived from human RBM3 AA range: 69-119
Specificity :	This antibody detects endogenous levels of RBM3 at Human/Mouse/Rat
Formulation :	Liquid in PBS containing 50% glycerol, 0.5% BSA and 0.02% sodium azide.
Source :	Polyclonal, Rabbit,IgG
Dilution :	WB 1:500-2000;IHC 1:50-300
Purification :	The antibody was affinity-purified from rabbit antiserum by affinity-chromatography using epitope-specific immunogen.

Concentration :	1 mg/ml
Storage Stability :	-15°C to -25°C/1 year(Do not lower than -25°C)
Molecularweight :	17kD
Background :	This gene is a member of the glycine-rich RNA-binding protein family and encodes a protein with one RNA recognition motif (RRM) domain. Expression of this gene is induced by cold shock and low oxygen tension. A pseudogene exists on chromosome 1. Multiple alternatively spliced transcript variants that are predicted to encode different isoforms have been characterized although some of these variants fit nonsense-mediated decay (NMD) criteria. [provided by RefSeq, Jul 2008],
Function :	PTM:Arg-105 is dimethylated, probably to asymmetric dimethylarginine.,similarity:Contains 1 RRM (RNA recognition motif) domain.,
Subcellular Location :	Nucleus . Cytoplasm . Cell projection, dendrite . Localizes in mRNA granules in dendrites. .

Products Images





Immunohistochemical analysis of paraffin-embedded human cervical carcinoma. 1, Antibody was diluted at 1:200(4 ° overnight). 2, Tris-EDTA,pH9.0 was used for antigen retrieval. 3,Secondary antibody was diluted at 1:200(room temperature, 45min).