

RAB12 rabbit pAb

Catalog No :	YT7626
Reactivity :	Human;Mouse;Rat
Applications :	WB;ELISA;IHC
Target :	RAB12
Gene Name :	RAB12
Protein Name :	RAB12
Human Gene Id :	201475
Human Swiss Prot No :	Q6IQ22
Mouse Gene Id :	19328
Mouse Swiss Prot No :	P35283
Rat Gene Id :	25530
Rat Swiss Prot No :	P35284
Immunogen :	Synthesized peptide derived from human RAB12 AA range: 186-236
Specificity :	This antibody detects endogenous levels of RAB12 at Human/Mouse/Rat
Formulation :	Liquid in PBS containing 50% glycerol, 0.5% BSA and 0.02% sodium azide.
Source :	Polyclonal, Rabbit,IgG
Dilution :	WB 1:500-2000;IHC 1:50-300; ELISA 2000-20000
Purification :	The antibody was affinity-purified from rabbit antiserum by affinity-chromatography using epitope-specific immunogen.

Concentration : 1 mg/ml

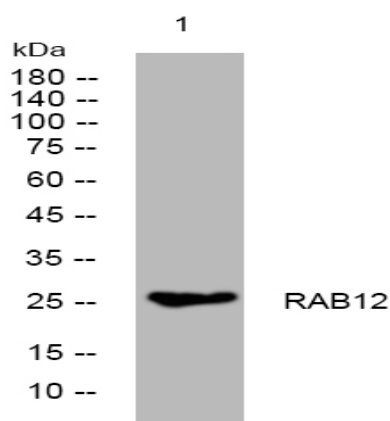
Storage Stability : -15°C to -25°C/1 year(Do not lower than -25°C)

Molecularweight : 27kD

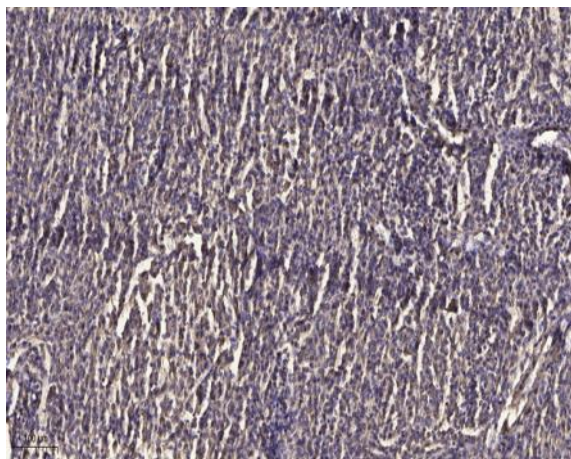
Function : caution:Could be the product of a pseudogene.,sequence caution:Intron retention.,similarity:Belongs to the small GTPase superfamily. Rab family.,

Subcellular Location : Recycling endosome membrane ; Lipid-anchor ; Cytoplasmic side . Lysosome membrane ; Lipid-anchor ; Cytoplasmic side . Golgi apparatus membrane . Cytoplasmic vesicle, autophagosome .

Products Images



Western blot analysis of lysates from MDA-MB cells, primary antibody was diluted at 1:1000, 4° over night



Immunohistochemical analysis of paraffin-embedded human meningioma. 1, Antibody was diluted at 1:200(4° overnight). 2, Tris-EDTA,pH9.0 was used for antigen retrieval. 3,Secondary antibody was diluted at 1:200(room temperature, 45min).