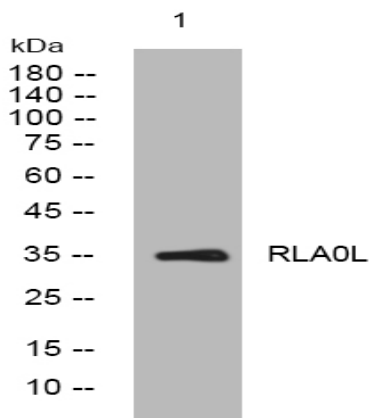
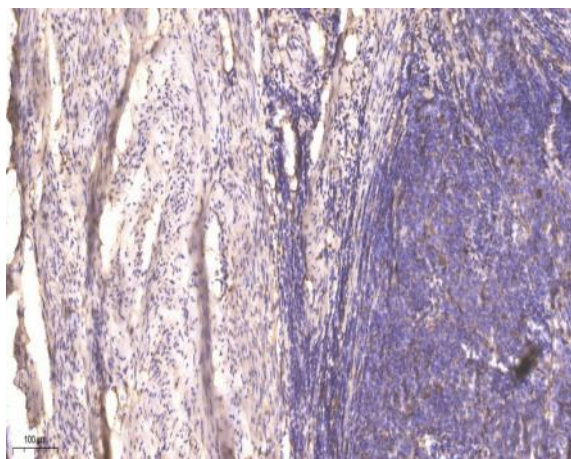


RLA0L rabbit pAb

Catalog No :	YT7628
Reactivity :	Human
Applications :	WB;IHC
Target :	RLA0L
Gene Name :	RPLP0P6
Protein Name :	RLA0L
Human Swiss Prot No :	Q8NHW5
Immunogen :	Synthesized peptide derived from human RLA0L AA range: 20-70
Specificity :	This antibody detects endogenous levels of RLA0L at Human
Formulation :	Liquid in PBS containing 50% glycerol, 0.5% BSA and 0.02% sodium azide.
Source :	Polyclonal, Rabbit,IgG
Dilution :	WB 1:500-2000;IHC 1:50-300
Purification :	The antibody was affinity-purified from rabbit antiserum by affinity-chromatography using epitope-specific immunogen.
Concentration :	1 mg/ml
Storage Stability :	-15°C to -25°C/1 year(Do not lower than -25°C)
Molecularweight :	35kD
Function :	function:Ribosomal protein P0 is the functional equivalent of E.coli protein L10.,similarity:Belongs to the ribosomal protein L10P family.,subunit:P0 forms a pentameric complex by interaction with dimers of P1 and P2.,subunit:P0 forms a pentameric complex by interaction with dimers of P1 and P2. Interacts with Lassa virus Z protein.,

**Subcellular
Location :**cytosolic large ribosomal subunit, preribosome, large subunit precursor,**Products Images**

Western blot analysis of lysates from MDA-MB cells, primary antibody was diluted at 1:1000, 4° over night



Immunohistochemical analysis of paraffin-embedded human cervical carcinoma. 1, Antibody was diluted at 1:200(4° overnight). 2, Tris-EDTA, pH9.0 was used for antigen retrieval. 3, Secondary antibody was diluted at 1:200(room temperature, 45min).