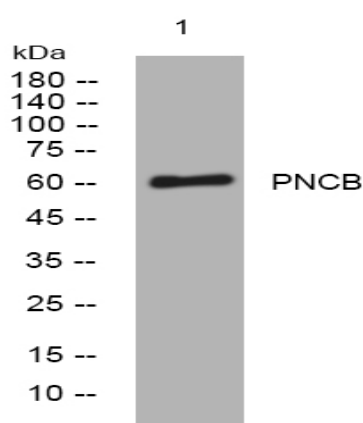


## PNCB rabbit pAb

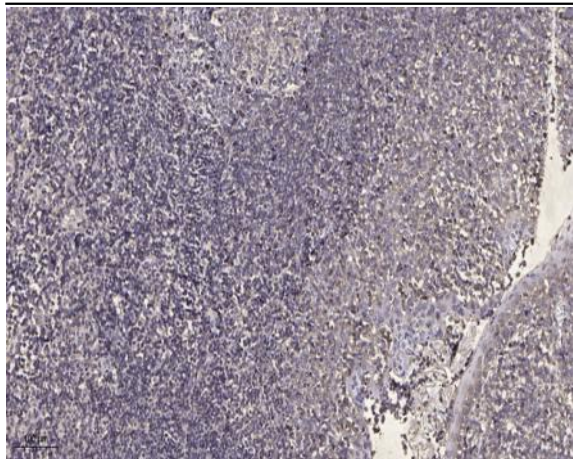
<b>Catalog No :</b>	YT7616
<b>Reactivity :</b>	Human;Mouse;Rat
<b>Applications :</b>	WB;IHC
<b>Target :</b>	PNCB
<b>Fields :</b>	>>Nicotinate and nicotinamide metabolism;>>Metabolic pathways;>>Biosynthesis of cofactors
<b>Gene Name :</b>	NAPRT1 FHIP
<b>Protein Name :</b>	PNCB
<b>Human Gene Id :</b>	93100
<b>Human Swiss Prot No :</b>	Q6XQN6
<b>Mouse Gene Id :</b>	223646
<b>Mouse Swiss Prot No :</b>	Q8CC86
<b>Rat Gene Id :</b>	315085
<b>Rat Swiss Prot No :</b>	Q6XQN1
<b>Immunogen :</b>	Synthesized peptide derived from human PNCB AA range: 134-184
<b>Specificity :</b>	This antibody detects endogenous levels of PNCB at Human/Mouse/Rat
<b>Formulation :</b>	Liquid in PBS containing 50% glycerol, 0.5% BSA and 0.02% sodium azide.
<b>Source :</b>	Polyclonal, Rabbit,IgG
<b>Dilution :</b>	WB 1:500-2000;IHC 1:50-300

<b>Purification :</b>	The antibody was affinity-purified from rabbit antiserum by affinity-chromatography using epitope-specific immunogen.
<b>Concentration :</b>	1 mg/ml
<b>Storage Stability :</b>	-15°C to -25°C/1 year(Do not lower than -25°C)
<b>Molecularweight :</b>	59kD
<b>Background :</b>	Nicotinic acid (NA; niacin) is converted by nicotinic acid phosphoribosyltransferase (NAPRT; EC 2.4.2.11) to NA mononucleotide (NaMN), which is then converted to NA adenine dinucleotide (NaAD), and finally to nicotinamide adenine dinucleotide (NAD), which serves as a coenzyme in cellular redox reactions and is an essential component of a variety of processes in cellular metabolism including response to stress (Hara et al., 2007).[supplied by OMIM, Mar 2008],
<b>Function :</b>	catalytic activity:Nicotinate D-ribonucleotide + diphosphate = nicotinate + 5-phospho-alpha-D-ribose 1-diphosphate.,function:Catalyzes the conversion of nicotinic acid (NA) to NA mononucleotide (NaMN). Essential for NA to increase cellular NAD levels and prevent oxidative stress of the cells.,pathway:Cofactor biosynthesis; NAD(+) biosynthesis; nicotinate ribonucleotide from nicotinate: step 1/1.,similarity:Belongs to the NAPRTase family.,
<b>Subcellular Location :</b>	Cytoplasm, cytosol .

## Products Images



Western blot analysis of lysates from Hela cells, primary antibody was diluted at 1:1000, 4° over night



Immunohistochemical analysis of paraffin-embedded human tonsil. 1, Antibody was diluted at 1:200(4 ° overnight). 2, Tris-EDTA,pH9.0 was used for antigen retrieval. 3,Secondary antibody was diluted at 1:200(room temperature, 45min).