

LRRN2 rabbit pAb

Catalog No :	YT7610
Reactivity :	Human
Applications :	WB;ELISA;IHC
Target :	LRRN2
Gene Name :	LRRN2 GAC1 LRRN5 UNQ256/PRO293
Protein Name :	LRRN2
Human Gene Id :	10446
Human Swiss Prot No :	O75325
Immunogen :	Synthesized peptide derived from human LRRN2 AA range: 296-346
Specificity :	This antibody detects endogenous levels of LRRN2 at Human
Formulation :	Liquid in PBS containing 50% glycerol, 0.5% BSA and 0.02% sodium azide.
Source :	Polyclonal, Rabbit,IgG
Dilution :	WB 1:500-2000;IHC 1:50-300; ELISA 2000-20000
Purification :	The antibody was affinity-purified from rabbit antiserum by affinity-chromatography using epitope-specific immunogen.
Concentration :	1 mg/ml
Storage Stability :	-15°C to -25°C/1 year(Do not lower than -25°C)
Molecularweight :	78kD
Background :	The protein encoded by this gene belongs to the leucine-rich repeat superfamily. This gene was found to be amplified and overexpressed in malignant gliomas. The encoded protein has homology with other proteins that function as cell-

adhesion molecules or as signal transduction receptors and is a candidate for the target gene in the 1q32.1 amplicon in malignant gliomas. Two alternatively spliced transcript variants encoding the same protein have been described for this gene. [provided by RefSeq, Jul 2008],

Function :

similarity:Contains 1 Ig-like C2-type (immunoglobulin-like) domain.,similarity:Contains 11 LRR (leucine-rich) repeats.,tissue specificity:Overamplified in malignant gliomas.,

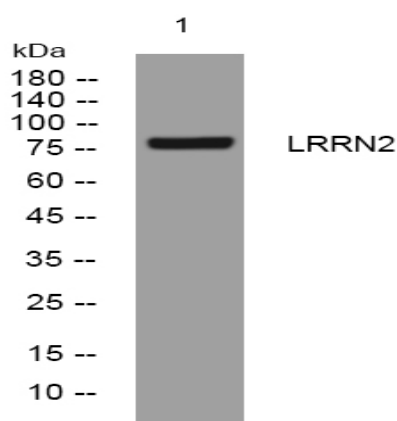
Subcellular Location :

Membrane ; Single-pass type I membrane protein .

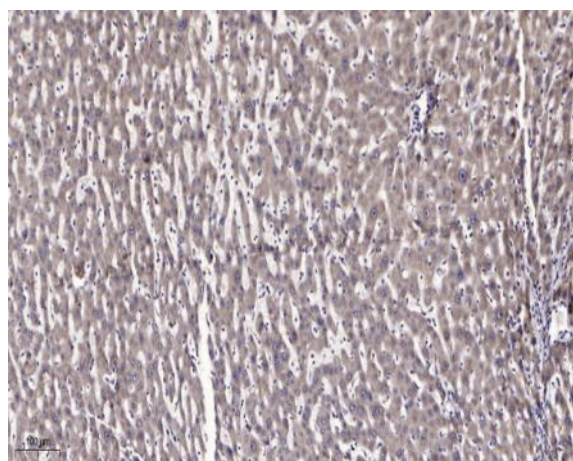
Expression :

Overamplified in malignant gliomas.

Products Images



Western blot analysis of lysates from A431 cells, primary antibody was diluted at 1:1000, 4° over night



Immunohistochemical analysis of paraffin-embedded human liver cancer. 1, Antibody was diluted at 1:200(4° overnight). 2, Tris-EDTA,pH9.0 was used for antigen retrieval. 3,Secondary antibody was diluted at 1:200(room temperature, 45min).