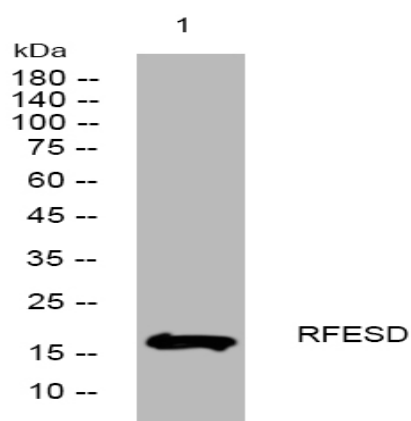


RFESD rabbit pAb

| | |
|------------------------------|---|
| Catalog No : | YT7599 |
| Reactivity : | Human;Mouse |
| Applications : | WB |
| Target : | RFESD |
| Gene Name : | RFESD |
| Protein Name : | RFESD |
| Human Gene Id : | 317671 |
| Human Swiss Prot No : | Q8TAC1 |
| Mouse Gene Id : | 218341 |
| Mouse Swiss Prot No : | Q8K2P6 |
| Immunogen : | Synthesized peptide derived from human RFESD AA range: 38-88 |
| Specificity : | This antibody detects endogenous levels of RFESD at Human/Mouse |
| Formulation : | Liquid in PBS containing 50% glycerol, 0.5% BSA and 0.02% sodium azide. |
| Source : | Polyclonal, Rabbit,IgG |
| Dilution : | WB 1:500-2000 |
| Purification : | The antibody was affinity-purified from rabbit antiserum by affinity-chromatography using epitope-specific immunogen. |
| Concentration : | 1 mg/ml |
| Storage Stability : | -15°C to -25°C/1 year(Do not lower than -25°C) |

Molecularweight : 17kD**Function :** cofactor: Binds 1 2Fe-2S cluster per subunit., similarity: Contains 1 Rieske domain.,

Products Images



Western blot analysis of lysates from HeLa cells, primary antibody was diluted at 1:1000, 4° over night