

WIPF3 rabbit pAb

Catalog No :	YT7587
Reactivity :	Human;Mouse;Rat
Applications :	WB
Target :	WIPF3
Fields :	>>Endocytosis;>>Pathogenic Escherichia coli infection;>>Yersinia infection
Gene Name :	WIPF3 CR16
Protein Name :	WIPF3
Human Swiss Prot No :	A6NGB9
Mouse Swiss Prot No :	P0C7L0
Rat Gene Id :	259242
Rat Swiss Prot No :	Q9Z0G8
Immunogen :	Synthesized peptide derived from human WIPF3 AA range: 66-116
Specificity :	This antibody detects endogenous levels of WIPF3 at Human/Mouse/Rat
Formulation :	Liquid in PBS containing 50% glycerol, 0.5% BSA and 0.02% sodium azide.
Source :	Polyclonal, Rabbit,IgG
Dilution :	WB 1:500-2000
Purification :	The antibody was affinity-purified from rabbit antiserum by affinity-chromatography using epitope-specific immunogen.
Concentration :	1 mg/ml

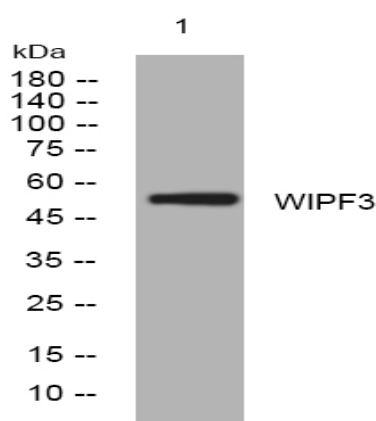
Storage Stability : -15°C to -25°C/1 year (Do not lower than -25°C)

Molecularweight : 53kD

Function : domain: The KLKR motif is essential for G-actin binding and for actin polymerization., domain: The profilin-binding motif has been implicated in the interaction with profilin and SH3 domains., domain: The WH2 domain is found in a number of putative actin-binding proteins., function: May be a regulator of cytoskeletal organization. May have a role in spermatogenesis., similarity: Belongs to the verprolin family., similarity: Contains 1 WH2 domain., subcellular location: In hippocampal neurons colocalizes with WASL in the cell body, axons and the growth cone., subunit: Interacts with WASL, and monomeric and filamentous actin.,

Subcellular Location : Cytoplasm. In hippocampal neurons colocalizes with WASL in the cell body, axons and the growth cone. .

Products Images



Western blot analysis of lysates from A549 cells, primary antibody was diluted at 1:1000, 4° over night