

SYNJ2 rabbit pAb

Catalog No :	YT7593
Reactivity :	Human;Mouse;Rat
Applications :	WB
Target :	SYNJ2
Fields :	>>Inositol phosphate metabolism;>>Metabolic pathways;>>Phosphatidylinositol signaling system
Gene Name :	SYNJ2 KIAA0348
Protein Name :	SYNJ2
Human Gene Id :	8871
Human Swiss Prot No :	O15056
Mouse Gene Id :	20975
Mouse Swiss Prot No :	Q9D2G5
Rat Gene Id :	84018
Rat Swiss Prot No :	O55207
Immunogen :	Synthesized peptide derived from human SYNJ2 AA range: 145-195
Specificity :	This antibody detects endogenous levels of SYNJ2 at Human/Mouse/Rat
Formulation :	Liquid in PBS containing 50% glycerol, 0.5% BSA and 0.02% sodium azide.
Source :	Polyclonal, Rabbit,IgG
Dilution :	WB 1:500-2000

Purification : The antibody was affinity-purified from rabbit antiserum by affinity-chromatography using epitope-specific immunogen.

Concentration : 1 mg/ml

Storage Stability : -15°C to -25°C/1 year(Do not lower than -25°C)

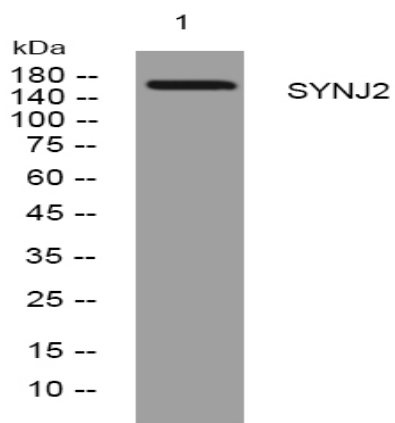
Molecularweight : 165kD

Background : The gene is a member of the inositol-polyphosphate 5-phosphatase family. The encoded protein interacts with the ras-related C3 botulinum toxin substrate 1, which causes translocation of the encoded protein to the plasma membrane where it inhibits clathrin-mediated endocytosis. Alternative splicing results in multiple transcript variants. [provided by RefSeq, May 2010],

Function : alternative products:Additional isoforms seem to exist,catalytic activity:1-phosphatidyl-1D-myo-inositol 4,5-bisphosphate + H(2)O = 1-phosphatidyl-1D-myo-inositol 4-phosphate + phosphate.,domain:The C-terminal proline-rich region of isoform 2B2 mediates binding to a variety of SH3 domain-containing proteins including SH3GL1, SH3GL2, SH3GL3 and GRB2.,function:Inositol 5-phosphatase which may be involved in distinct membrane trafficking and signal transduction pathways. May mediate the inhibitory effect of Rac1 on endocytosis.,similarity:Belongs to the synaptojanin family.,similarity:Contains 1 RRM (RNA recognition motif) domain.,similarity:Contains 1 SAC domain.,similarity:In the central section; belongs to the inositol-1,4,5-trisphosphate 5-phosphatase family.,subcellular location:Predominantly associated with the particulate fractions.,subunit:Binds to GRB2. Isoform 2A binds to SYNJ2BP/

Subcellular Location : Cytoplasm . Cell membrane . Membrane raft . Cell junction, synapse, presynapse . Cytoplasm, cytoskeleton . Localizes at presynapse terminals in brain and at bundles of microtubules surrounding the nucleus in the elongating spermatids corresponding to the manchette (By similarity). Translocates from the cytoplasm to membrane ruffles in a RAC1-dependent manner (PubMed:11084340). .

Products Images



Western blot analysis of lysates from 293T cells, primary antibody was diluted at 1:1000, 4° over night