

## SGCG rabbit pAb

<b>Catalog No :</b>	YT7590
<b>Reactivity :</b>	Human;Mouse
<b>Applications :</b>	WB;IHC
<b>Target :</b>	SGCG
<b>Fields :</b>	>>Hypertrophic cardiomyopathy;>>Arrhythmogenic right ventricular cardiomyopathy;>>Dilated cardiomyopathy;>>Viral myocarditis
<b>Gene Name :</b>	SGCG
<b>Protein Name :</b>	SGCG
<b>Human Gene Id :</b>	6445
<b>Human Swiss Prot No :</b>	Q13326
<b>Mouse Gene Id :</b>	24053
<b>Mouse Swiss Prot No :</b>	P82348
<b>Immunogen :</b>	Synthesized peptide derived from human SGCG AA range: 213-263
<b>Specificity :</b>	This antibody detects endogenous levels of SGCG at Human/Mouse
<b>Formulation :</b>	Liquid in PBS containing 50% glycerol, 0.5% BSA and 0.02% sodium azide.
<b>Source :</b>	Polyclonal, Rabbit,IgG
<b>Dilution :</b>	WB 1:500-2000;IHC 1:50-300
<b>Purification :</b>	The antibody was affinity-purified from rabbit antiserum by affinity-chromatography using epitope-specific immunogen.
<b>Concentration :</b>	1 mg/ml

**Storage Stability :** -15°C to -25°C/1 year(Do not lower than -25°C)

**Molecularweight :** 32kD

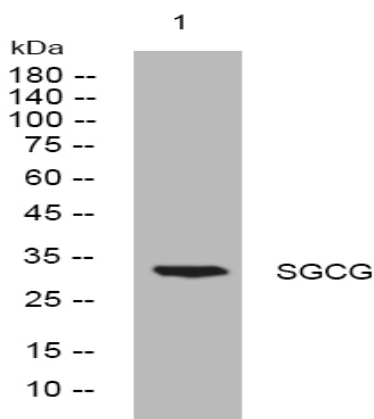
**Background :** This gene encodes gamma-sarcoglycan, one of several sarcolemmal transmembrane glycoproteins that interact with dystrophin. The dystrophin-glycoprotein complex (DGC) spans the sarcolemma and is comprised of dystrophin, syntrophin, alpha- and beta-dystroglycans and sarcoglycans. The DGC provides a structural link between the subsarcolemmal cytoskeleton and the extracellular matrix of muscle cells. Defects in the encoded protein can lead to early onset autosomal recessive muscular dystrophy, in particular limb-girdle muscular dystrophy, type 2C (LGMD2C). [provided by RefSeq, Oct 2008],

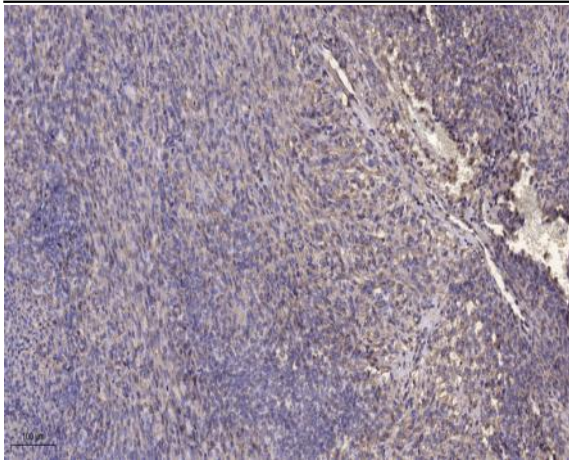
**Function :** disease:Defects in SGCG are the cause of limb-girdle muscular dystrophy type 2C (LGMD2C) [MIM:253700]. LGMD2C is characterized by progressive muscle wasting from early childhood.,function:Component of the sarcoglycan complex, a subcomplex of the dystrophin-glycoprotein complex which forms a link between the F-actin cytoskeleton and the extracellular matrix.,online information:SGCG mutations in LGMD2C,similarity:Belongs to the sarcoglycan beta/delta/gamma/zeta family.,subunit:Interacts with the syntrophin SNTA1. Cross-link to form 2 major subcomplexes: one consisting of SGCB, SGCD and SGCG and the other consisting of SGCB and SGCD. The association between SGCB and SGCG is particularly strong while SGCA is loosely associated with the other sarcoglycans (By similarity). Interacts with FLNC.,tissue specificity:Expressed in skeletal and heart muscle.,

**Subcellular Location :** Cell membrane, sarcolemma ; Single-pass type II membrane protein . Cytoplasm, cytoskeleton .

**Expression :** Expressed in skeletal and heart muscle.

## Products Images





Immunohistochemical analysis of paraffin-embedded human Colon cancer. 1, Antibody was diluted at 1:200(4° overnight). 2, Tris-EDTA,pH9.0 was used for antigen retrieval. 3,Secondary antibody was diluted at 1:200(room temperature, 45min).