

TM199 rabbit pAb

Catalog No :	YT7576
Reactivity :	Human;Mouse;Rat
Applications :	WB
Target :	TM199
Gene Name :	TMEM199 C17orf32
Protein Name :	TM199
Human Gene Id :	147007
Human Swiss Prot No :	Q8N511
Mouse Gene Id :	195040
Mouse Swiss Prot No :	Q5SYH2
Rat Gene Id :	303332
Rat Swiss Prot No :	Q5BK13
Immunogen :	Synthesized peptide derived from human TM199 AA range: 38-88
Specificity :	This antibody detects endogenous levels of TM199 at Human/Mouse/Rat
Formulation :	Liquid in PBS containing 50% glycerol, 0.5% BSA and 0.02% sodium azide.
Source :	Polyclonal, Rabbit,IgG
Dilution :	WB 1:500-2000
Purification :	The antibody was affinity-purified from rabbit antiserum by affinity-chromatography using epitope-specific immunogen.

Concentration : 1 mg/ml

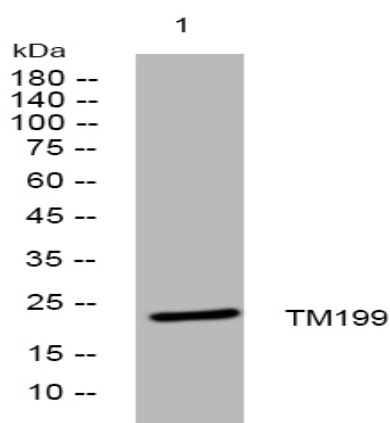
Storage Stability : -15°C to -25°C/1 year(Do not lower than -25°C)

Molecularweight : 23kD

Background : The protein encoded by this gene has been observed to localize to the endoplasmic reticulum (ER)-Golgi intermediate compartment (ERGIC) and coat protein complex I (COPI) in some human cells. The encoded protein shares some homology with the yeast protein Vma12. Defects in this gene are a cause of congenital disorder of glycosylation, type IIp. [provided by RefSeq, Mar 2016],

Subcellular Location : Cytoplasmic vesicle, COPI-coated vesicle membrane ; Multi-pass membrane protein . Endoplasmic reticulum-Golgi intermediate compartment membrane ; Multi-pass membrane protein . Endoplasmic reticulum membrane ; Multi-pass membrane protein . Partial colocalization with GOLGB1. .

Products Images



Western blot analysis of lysates from U2OS cells, primary antibody was diluted at 1:1000, 4° over night