

CETN2 rabbit pAb

Catalog No :	YT7570
Reactivity :	Human;Mouse
Applications :	WB
Target :	CETN2
Fields :	>>Nucleotide excision repair
Gene Name :	CETN2 CALT CEN2
Protein Name :	CETN2
Human Gene Id :	1069
Human Swiss Prot No :	P41208
Mouse Gene Id :	26370
Mouse Swiss Prot No :	Q9R1K9
Immunogen :	Synthesized peptide derived from human CETN2 AA range: 1-51
Specificity :	This antibody detects endogenous levels of CETN2 at Human/Mouse
Formulation :	Liquid in PBS containing 50% glycerol, 0.5% BSA and 0.02% sodium azide.
Source :	Polyclonal, Rabbit,IgG
Dilution :	WB 1[?]500-2000
Purification :	The antibody was affinity-purified from rabbit antiserum by affinity-chromatography using epitope-specific immunogen.
Concentration :	1 mg/ml

Storage Stability : -15°C to -25°C/1 year(Do not lower than -25°C)

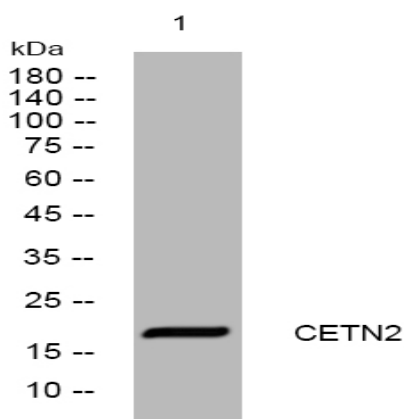
Molecularweight : 19kD

Background : Caltractin belongs to a family of calcium-binding proteins and is a structural component of the centrosome. The high level of conservation from algae to humans and its association with the centrosome suggested that caltractin plays a fundamental role in the structure and function of the microtubule-organizing center, possibly required for the proper duplication and segregation of the centrosome. [provided by RefSeq, Jul 2008],

Function : function:Plays a fundamental role in microtubule-organizing center structure and function. Required for centriole duplication and correct spindle formation. Has a role in regulating cytokinesis and genome stability via cooperation with CALM1 and CEP110.,miscellaneous:Binds two moles of calcium per mole of protein.,similarity:Belongs to the centrin family.,similarity:Contains 4 EF-hand domains.,subcellular location:Centrosome of S-phase, interphase and mitotic cells.,subunit:Monomer. Interacts with CEP110, SFI1 and with XPC.,

Subcellular Location : Cytoplasm, cytoskeleton, microtubule organizing center, centrosome .
Cytoplasm, cytoskeleton, microtubule organizing center, centrosome, centriole .
Nucleus envelope . Nucleus, nuclear pore complex . Nucleus .

Products Images



Western blot analysis of lysates from VEC cells, primary antibody was diluted at 1:1000, 4° over night