

Z354A rabbit pAb

Catalog No :	YT7572
Reactivity :	Human;Mouse;Rat
Applications :	WB
Target :	Z354A
Fields :	>>Herpes simplex virus 1 infection
Gene Name :	ZNF354A EZNF HKL1 TCF17
Protein Name :	Z354A
Human Gene Id :	6940
Human Swiss Prot No :	O60765
Mouse Gene Id :	21408
Mouse Swiss Prot No :	Q61751
Rat Gene Id :	24522
Rat Swiss Prot No :	Q02975
Immunogen :	Synthesized peptide derived from human Z354A AA range: 272-322
Specificity :	This antibody detects endogenous levels of Z354A at Human/Mouse/Rat
Formulation :	Liquid in PBS containing 50% glycerol, 0.5% BSA and 0.02% sodium azide.
Source :	Polyclonal, Rabbit,IgG
Dilution :	WB 1[?]500-2000
Purification :	The antibody was affinity-purified from rabbit antiserum by affinity-

chromatography using epitope-specific immunogen.

Concentration : 1 mg/ml

Storage Stability : -15°C to -25°C/1 year(Do not lower than -25°C)

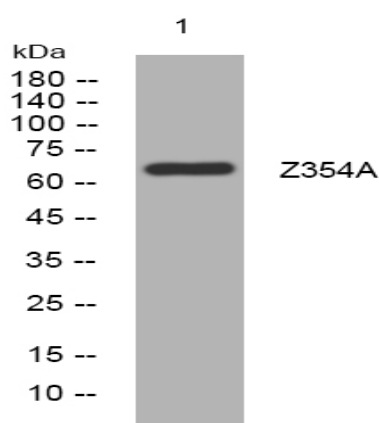
Molecularweight : 67kD

Function : similarity:Belongs to the krueppel C2H2-type zinc-finger protein family.,similarity:Contains 1 KRAB domain.,similarity:Contains 13 C2H2-type zinc fingers.,tissue specificity:Expressed in kidney and inner ear.,

Subcellular Location : Nucleus .

Expression : Expressed in kidney and inner ear.

Products Images



Western blot analysis of lysates from A431 cells, primary antibody was diluted at 1:1000, 4° over night