

NAL12 rabbit pAb

Catalog No :	YT7568
Reactivity :	Human;Mouse
Applications :	WB;ELISA;IHC
Target :	NAL12
Fields :	>>NOD-like receptor signaling pathway
Gene Name :	NLRP12 NALP12 PYPAF7 RNO
Protein Name :	NAL12
Human Gene Id :	91662
Human Swiss Prot No :	P59046
Mouse Gene Id :	378425
Mouse Swiss Prot No :	E9Q5R7
Immunogen :	Synthesized peptide derived from human NAL12 AA range: 456-506
Specificity :	This antibody detects endogenous levels of NAL12 at Human/Mouse
Formulation :	Liquid in PBS containing 50% glycerol, 0.5% BSA and 0.02% sodium azide.
Source :	Polyclonal, Rabbit,IgG
Dilution :	WB 1:500-2000;IHC 1:50-300; ELISA 2000-20000
Purification :	The antibody was affinity-purified from rabbit antiserum by affinity-chromatography using epitope-specific immunogen.
Concentration :	1 mg/ml

Storage Stability : -15°C to -25°C/1 year(Do not lower than -25°C)

Molecularweight : 117kD

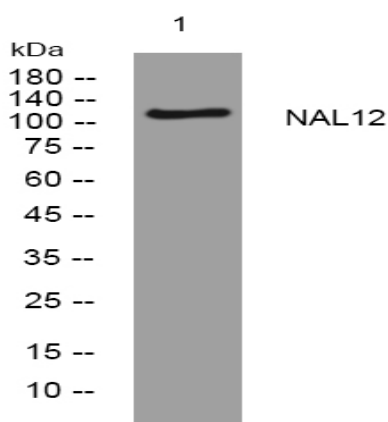
Background : This gene encodes a member of the CATERPILLER family of cytoplasmic proteins. The encoded protein, which contains an N-terminal pyrin domain, a NACHT domain, a NACHT-associated domain, and a C-terminus leucine-rich repeat region, functions as an attenuating factor of inflammation by suppressing inflammatory responses in activated monocytes. Mutations in this gene cause familial cold autoinflammatory syndrome type 2. Alternative splicing results in multiple transcript variants. [provided by RefSeq, Mar 2013],

Function : disease:Defects in NLRP12 are the cause of familial cold autoinflammatory syndrome type 2 (FCAS2) [MIM:611762]. FCAS are rare autosomal dominant systemic inflammatory diseases characterized by episodes of rash, arthralgia, fever and conjunctivitis after generalized exposure to cold.,function:May mediate activation of CASP1 via ASC and promote activation of NF-kappa-B via IKK.,induction:By nitric oxide and DMSO in HL60 cells, an acute myeloid leukemia cell line.,similarity:Belongs to the NLRP family.,similarity:Contains 1 DAPIN domain.,similarity:Contains 1 NACHT domain.,similarity:Contains 8 LRR (leucine-rich) repeats.,subunit:Binds to ASC with its DAPIN domain.,tissue specificity:Detected only in peripheral blood leukocytes, predominantly in eosinophils and granulocytes, and at lower levels in monocytes.,

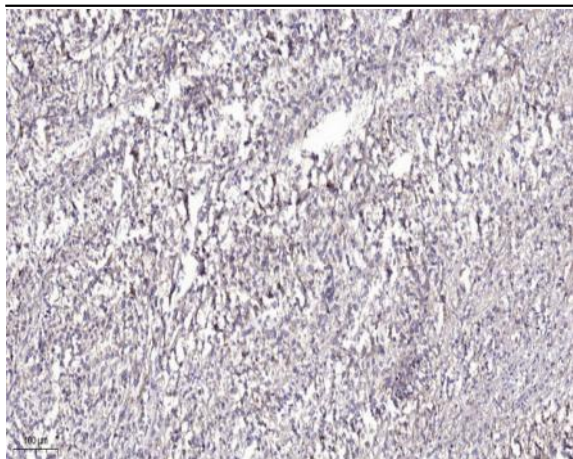
Subcellular Location : Cytoplasm .

Expression : Detected only in peripheral blood leukocytes, predominantly in eosinophils and granulocytes, and at lower levels in monocytes.

Products Images



Western blot analysis of lysates from VEC cells, primary antibody was diluted at 1:1000, 4° over night



Immunohistochemical analysis of paraffin-embedded human Colon cancer. 1, Antibody was diluted at 1:200(4° overnight). 2, Tris-EDTA,pH9.0 was used for antigen retrieval. 3,Secondary antibody was diluted at 1:200(room temperature, 45min).