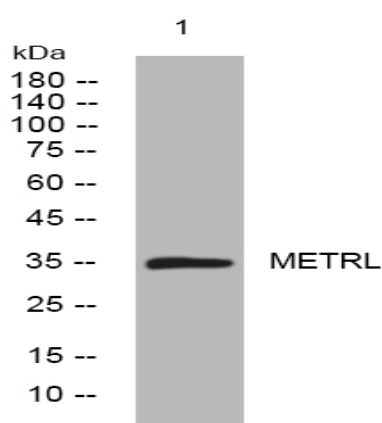


METRL rabbit pAb

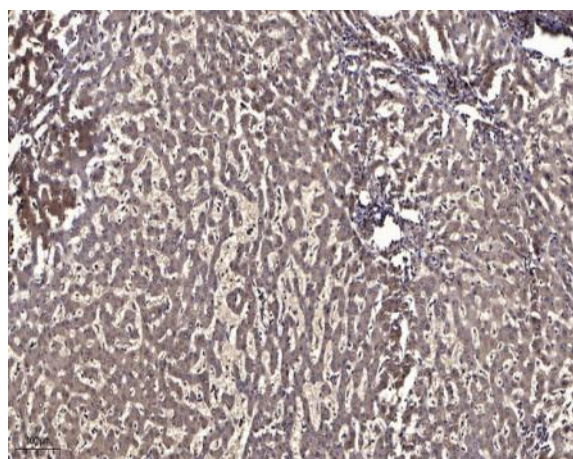
Catalog No :	YT7556
Reactivity :	Human;Mouse;Rat
Applications :	WB;IHC
Target :	METRL
Gene Name :	METRNL
Protein Name :	METRL
Human Gene Id :	284207
Human Swiss Prot No :	Q641Q3
Mouse Gene Id :	210029
Mouse Swiss Prot No :	Q8VE43
Rat Gene Id :	316842
Rat Swiss Prot No :	Q5RJL6
Immunogen :	Synthesized peptide derived from human METRL AA range: 78-128
Specificity :	This antibody detects endogenous levels of METRL at Human/Mouse/Rat
Formulation :	Liquid in PBS containing 50% glycerol, 0.5% BSA and 0.02% sodium azide.
Source :	Polyclonal, Rabbit,IgG
Dilution :	WB 1:500-2000;IHC 1:50-300
Purification :	The antibody was affinity-purified from rabbit antiserum by affinity-chromatography using epitope-specific immunogen.

Concentration :	1 mg/ml
Storage Stability :	-15°C to -25°C/1 year(Do not lower than -25°C)
Molecularweight :	34kD
Function :	similarity:Belongs to the meteorin family.,
Subcellular Location :	Secreted .
Expression :	Highly expressed in the skeletal muscle, in subcutaneous adipose tissue, epididymal white adipose tissue depots and heart. Also expressed in brown adipose tissues and kidney.

Products Images



Western blot analysis of lysates from HpeG2 cells, primary antibody was diluted at 1:1000, 4° over night



Immunohistochemical analysis of paraffin-embedded human liver cancer. 1, Antibody was diluted at 1:200(4° overnight). 2, Tris-EDTA,pH9.0 was used for antigen retrieval. 3,Secondary antibody was diluted at 1:200(room temperature, 45min).