

ZBT20 rabbit pAb

| | |
|------------------------------|---|
| Catalog No : | YT7565 |
| Reactivity : | Human;Mouse |
| Applications : | WB |
| Target : | ZBT20 |
| Gene Name : | ZBTB20 DPZF ZNF288 |
| Protein Name : | ZBT20 |
| Human Gene Id : | 26137 |
| Human Swiss Prot No : | Q9HC78 |
| Mouse Gene Id : | 56490 |
| Mouse Swiss Prot No : | Q8K0L9 |
| Immunogen : | Synthesized peptide derived from human ZBT20 AA range: 633-683 |
| Specificity : | This antibody detects endogenous levels of ZBT20 at Human/Mouse |
| Formulation : | Liquid in PBS containing 50% glycerol, 0.5% BSA and 0.02% sodium azide. |
| Source : | Polyclonal, Rabbit,IgG |
| Dilution : | WB 1:500-2000 |
| Purification : | The antibody was affinity-purified from rabbit antiserum by affinity-chromatography using epitope-specific immunogen. |
| Concentration : | 1 mg/ml |
| Storage Stability : | -15°C to -25°C/1 year(Do not lower than -25°C) |

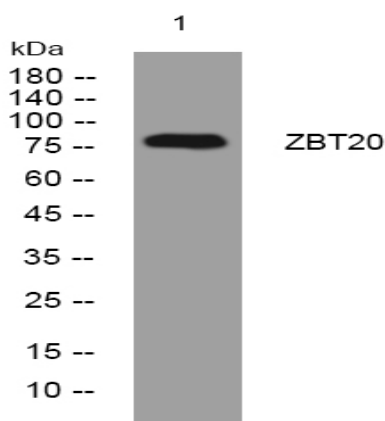
Molecularweight : 82kD

Function : function:May be a transcription factor that may be involved in hematopoiesis, oncogenesis, and immune responses.,similarity:Contains 1 BTB (POZ) domain.,similarity:Contains 5 C2H2-type zinc fingers.,subunit:Can homodimerize. Binds to DNA.,tissue specificity:Expressed in spleen, lymph node, thymus, peripheral blood leukocytes, and fetal liver.,

Subcellular Location : Nucleus .

Expression : Expressed in spleen, lymph node, thymus, peripheral blood leukocytes, and fetal liver.

Products Images



Western blot analysis of lysates from DU145 cells, primary antibody was diluted at 1:1000, 4° over night