

LOX15 rabbit pAb

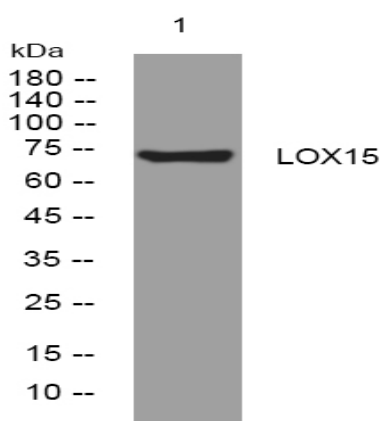
| | |
|------------------------------|--|
| Catalog No : | YT7564 |
| Reactivity : | Human;Rat;Mouse; |
| Applications : | WB;ELISA;IHC |
| Target : | LOX15 |
| Fields : | >>Arachidonic acid metabolism;>>Linoleic acid metabolism;>>Metabolic pathways;>>Ferroptosis;>>Necroptosis;>>Serotonergic synapse |
| Gene Name : | ALOX15 LOG15 |
| Protein Name : | LOX15 |
| Human Gene Id : | 246 |
| Human Swiss Prot No : | P16050 |
| Immunogen : | Synthesized peptide derived from human LOX15 AA range: 156-206 |
| Specificity : | This antibody detects endogenous levels of LOX15 at Human |
| Formulation : | Liquid in PBS containing 50% glycerol, 0.5% BSA and 0.02% sodium azide. |
| Source : | Polyclonal, Rabbit,IgG |
| Dilution : | WB 1:500-2000;IHC 1:50-300; ELISA 2000-20000 |
| Purification : | The antibody was affinity-purified from rabbit antiserum by affinity-chromatography using epitope-specific immunogen. |
| Concentration : | 1 mg/ml |
| Storage Stability : | -15°C to -25°C/1 year(Do not lower than -25°C) |
| Molecularweight : | 73kD |

Function : catalytic activity:Arachidonate + O(2) = (5Z,8Z,11Z,13E)-(15S)-15-hydroperoxyicososa-5,8,11,13-tetraenoate.,cofactor: Binds 1 iron ion per subunit.,function: Converts arachidonic acid to 15S-hydroperoxyeicosatetraenoic acid. Also acts on C-12 of arachidonate as well as on linoleic acid.,pathway: Lipid metabolism; leukotriene D4 biosynthesis.,similarity: Belongs to the lipoxygenase family.,similarity: Contains 1 lipoxygenase domain.,similarity: Contains 1 PLAT domain.,

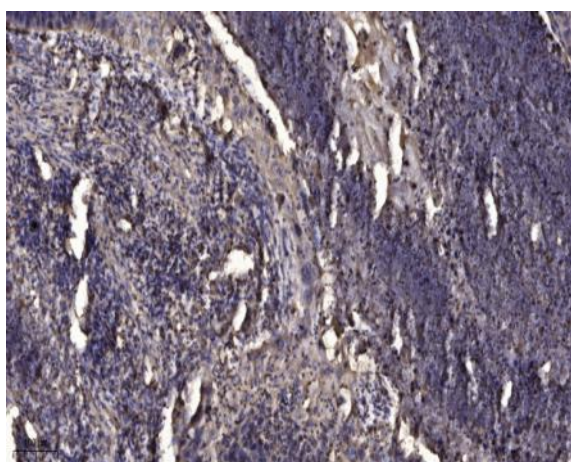
Subcellular Location : Cytoplasm, cytosol . Cell membrane ; Peripheral membrane protein . Lipid droplet . Predominantly cytosolic; becomes enriched at membranes upon calcium binding (By similarity). Translocates from the cytosol to the plasma membrane when stimulated by IL13/interleukin-13 and in macrophages binding apoptotic cells (By similarity). .

Expression : Detected in monocytes and eosinophils (at protein level). Expressed in airway epithelial cells.

Products Images



Western blot analysis of lysates from THP-1 cells, primary antibody was diluted at 1:1000, 4° over night



Immunohistochemical analysis of paraffin-embedded human Squamous cell carcinoma of lung. 1, Antibody was diluted at 1:200(4° overnight). 2, Tris-EDTA,pH9.0 was used for antigen retrieval. 3,Secondary antibody was diluted at 1:200(room temperature, 45min).