

HSF2B rabbit pAb

Catalog No :	YT7552
Reactivity :	Human;Mouse
Applications :	WB
Target :	HSF2B
Gene Name :	HSF2BP
Protein Name :	HSF2B
Human Gene Id :	11077
Human Swiss Prot No :	O75031
Immunogen :	Synthesized peptide derived from human HSF2B AA range: 201-251
Specificity :	This antibody detects endogenous levels of HSF2B at Human
Formulation :	Liquid in PBS containing 50% glycerol, 0.5% BSA and 0.02% sodium azide.
Source :	Polyclonal, Rabbit,IgG
Dilution :	WB 1:500-2000
Purification :	The antibody was affinity-purified from rabbit antiserum by affinity-chromatography using epitope-specific immunogen.
Concentration :	1 mg/ml
Storage Stability :	-15°C to -25°C/1 year(Do not lower than -25°C)
Molecularweight :	37kD
Background :	HSF2 binding protein (HSF2BP) associates with HSF2. The interaction occurs between the trimerization domain of HSF2 and the amino terminal hydrophilic region of HSF2BP that comprises two leucine zipper motifs. HSF2BP may

therefore be involved in modulating HSF2 activation. [provided by RefSeq, Jul 2008],

Function :

function:May be involved in modulating HSF2 activation in testis.,PTM:Sumoylated by UBE2I in response to MEKK1-mediated stimuli.,subunit:Associates with HSF2. The interaction seems to occur between the trimerization domain of HSF2 and the N-terminal hydrophilic region of HSF2BP.,tissue specificity:Testis specific.,

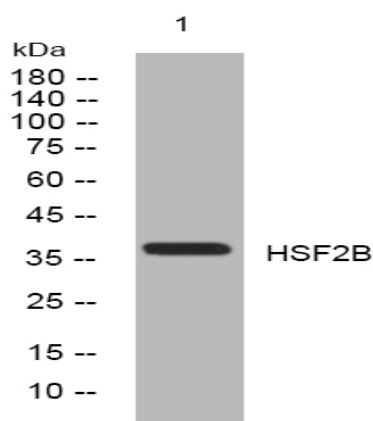
Subcellular Location :

Cytoplasm . Chromosome . Localizes on double-strand breaks (DSBs) in mitotic and meiotic chromosomes. .

Expression :

Testis specific. Overexpressed in some tumors (PubMed:31242413).

Products Images



Western blot analysis of lysates from 293T cells, primary antibody was diluted at 1:1000, 4 ° over night