

ARH37 rabbit pAb

Catalog No :	YT7550
Reactivity :	Human;Mouse;Rat
Applications :	WB
Target :	ARH37
Gene Name :	ARHGFEF37
Protein Name :	ARH37
Human Gene Id :	389337
Human Swiss Prot No :	A1IGU5
Mouse Gene Id :	328967
Mouse Swiss Prot No :	A1IGU4
Rat Gene Id :	307398
Rat Swiss Prot No :	A1IGU3
Immunogen :	Synthesized peptide derived from human ARH37 AA range: 24-74
Specificity :	This antibody detects endogenous levels of ARH37 at Human/Mouse/Rat
Formulation :	Liquid in PBS containing 50% glycerol, 0.5% BSA and 0.02% sodium azide.
Source :	Polyclonal, Rabbit,IgG
Dilution :	WB 1:500-2000
Purification :	The antibody was affinity-purified from rabbit antiserum by affinity-chromatography using epitope-specific immunogen.

Concentration : 1 mg/ml

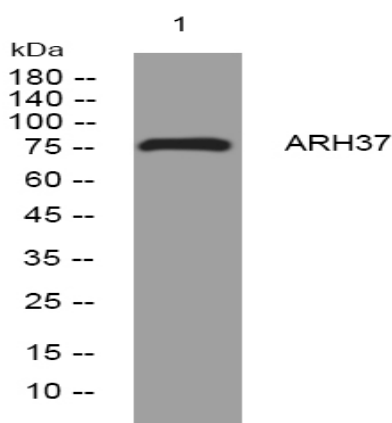
Storage Stability : -15°C to -25°C/1 year(Do not lower than -25°C)

Molecularweight : 74kD

Function : function:May act as a guanine nucleotide exchange factor (GEF).,similarity:Contains 1 BAR domain.,similarity:Contains 1 DH (DBL-homology) domain.,similarity:Contains 2 SH3 domains.,

Subcellular Location : cytoplasm,

Products Images



Western blot analysis of lysates from HeLa cells, primary antibody was diluted at 1:1000, 4° over night