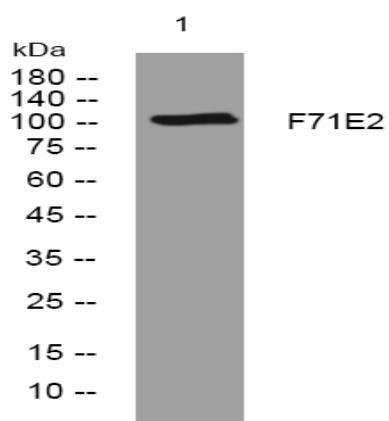


F71E2 rabbit pAb

Catalog No :	YT7538
Reactivity :	Human
Applications :	WB
Target :	F71E2
Gene Name :	FAM71E2 C19orf16
Protein Name :	F71E2
Human Gene Id :	284418
Human Swiss Prot No :	Q8N5Q1
Immunogen :	Synthesized peptide derived from human F71E2 AA range: 465-515
Specificity :	This antibody detects endogenous levels of F71E2 at Human
Formulation :	Liquid in PBS containing 50% glycerol, 0.5% BSA and 0.02% sodium azide.
Source :	Polyclonal, Rabbit,IgG
Dilution :	WB 1:500-2000
Purification :	The antibody was affinity-purified from rabbit antiserum by affinity-chromatography using epitope-specific immunogen.
Concentration :	1 mg/ml
Storage Stability :	-15°C to -25°C/1 year(Do not lower than -25°C)
Molecularweight :	101kD

Products Images



Western blot analysis of lysates from PC-12 cells, primary antibody was diluted at 1:1000, 4° over night