

ZSWM7 rabbit pAb

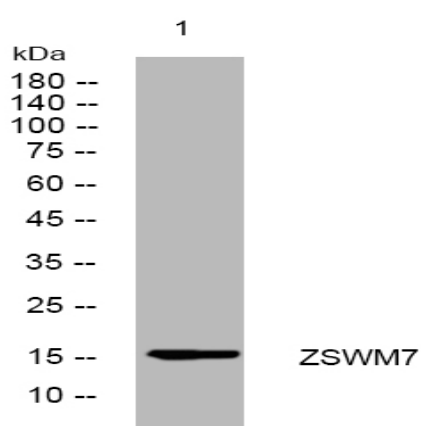
Catalog No :	YT7547
Reactivity :	Human;Mouse
Applications :	WB
Target :	ZSWM7
Gene Name :	ZSWIM7 SWS1
Protein Name :	ZSWM7
Human Gene Id :	125150
Human Swiss Prot No :	Q19AV6
Mouse Gene Id :	69747
Mouse Swiss Prot No :	Q9CWQ2
Immunogen :	Synthesized peptide derived from human ZSWM7 AA range: 68-118
Specificity :	This antibody detects endogenous levels of ZSWM7 at Human/Mouse
Formulation :	Liquid in PBS containing 50% glycerol, 0.5% BSA and 0.02% sodium azide.
Source :	Polyclonal, Rabbit,IgG
Dilution :	WB 1:500-2000
Purification :	The antibody was affinity-purified from rabbit antiserum by affinity-chromatography using epitope-specific immunogen.
Concentration :	1 mg/ml
Storage Stability :	-15°C to -25°C/1 year(Do not lower than -25°C)

Molecularweight : 15kD

Function : function:Involved in early stages of the homologous recombination repair (HRR) pathway of double-stranded DNA breaks arising during DNA replication or induced by DNA-damaging agents.,similarity:Belongs to the SWS1 family.,similarity:Contains 1 SWIM-type zinc finger.,subunit:Interacts with RAD51L3.,

Subcellular Location : Nucleus .

Products Images



Western blot analysis of lysates from HpeG2 cells, primary antibody was diluted at 1:1000, 4° over night