

MFS12 rabbit pAb

Catalog No :	YT7536
Reactivity :	Human;Mouse
Applications :	WB;ELISA;IHC
Target :	MFS12
Gene Name :	MFSD12 C19orf28
Protein Name :	MFS12
Human Gene Id :	126321
Human Swiss Prot No :	Q6NUT3
Mouse Gene Id :	73822
Mouse Swiss Prot No :	Q3U481
Immunogen :	Synthesized peptide derived from human MFS12 AA range: 78-128
Specificity :	This antibody detects endogenous levels of MFS12 at Human/Mouse
Formulation :	Liquid in PBS containing 50% glycerol, 0.5% BSA and 0.02% sodium azide.
Source :	Polyclonal, Rabbit,IgG
Dilution :	WB 1:500-2000;IHC 1:50-300; ELISA 2000-20000
Purification :	The antibody was affinity-purified from rabbit antiserum by affinity-chromatography using epitope-specific immunogen.
Concentration :	1 mg/ml
Storage Stability :	-15°C to -25°C/1 year(Do not lower than -25°C)

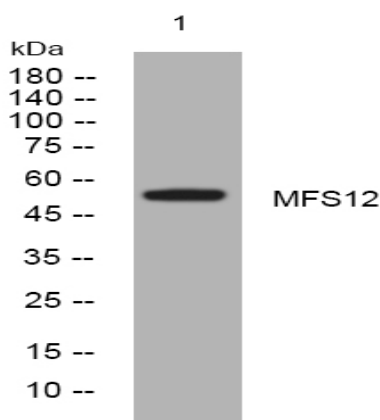
Molecularweight : 53kD

Function : caution:The sequence shown here is derived from an Ensembl automatic analysis pipeline and should be considered as preliminary data.,similarity:Belongs to the major facilitator superfamily.,

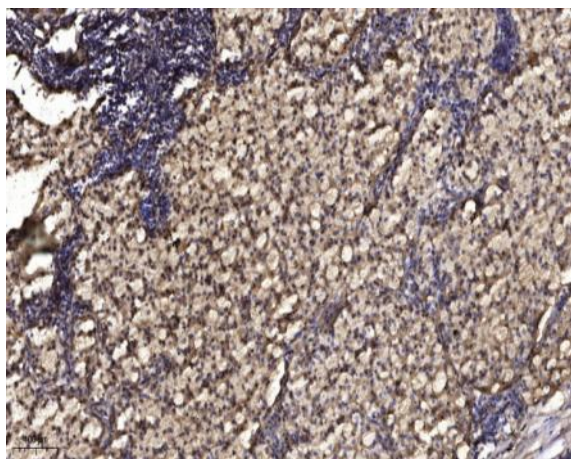
Subcellular Location : Melanosome membrane ; Multi-pass membrane protein . Lysosome membrane ; Multi-pass membrane protein .

Expression : Widely expressed, with high expression in primary melanocytes.

Products Images



Western blot analysis of lysates from HEK293 cells, primary antibody was diluted at 1:1000, 4° over night



Immunohistochemical analysis of paraffin-embedded human Squamous cell carcinoma of lung. 1, Antibody was diluted at 1:200(4° overnight). 2, Tris-EDTA,pH9.0 was used for antigen retrieval. 3,Secondary antibody was diluted at 1:200(room temperature, 45min).