

RN103 rabbit pAb

Catalog No :	YT7532
Reactivity :	Human;Mouse;Rat
Applications :	WB;IHC
Target :	RN103
Gene Name :	RNF103 ZFP103
Protein Name :	RN103
Human Gene Id :	7844
Human Swiss Prot No :	O00237
Mouse Gene Id :	22644
Mouse Swiss Prot No :	Q9R1W3
Rat Swiss Prot No :	Q9EPZ8
Immunogen :	Synthesized peptide derived from human RN103 AA range: 243-293
Specificity :	This antibody detects endogenous levels of RN103 at Human/Mouse/Rat
Formulation :	Liquid in PBS containing 50% glycerol, 0.5% BSA and 0.02% sodium azide.
Source :	Polyclonal, Rabbit,IgG
Dilution :	WB 1:500-2000;IHC 1:50-300
Purification :	The antibody was affinity-purified from rabbit antiserum by affinity-chromatography using epitope-specific immunogen.
Concentration :	1 mg/ml

Storage Stability : -15°C to -25°C/1 year(Do not lower than -25°C)

Molecularweight : 75kD

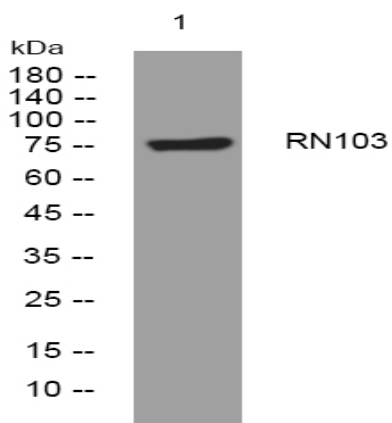
Background : The protein encoded by this gene contains a RING-H2 finger, a motif known to be involved in protein-protein and protein-DNA interactions. This gene is highly expressed in normal cerebellum, but not in the cerebral cortex. The expression of the rat counterpart in the frontal cortex and hippocampus was shown to be induced by electroconvulsive treatment (ECT) as well as chronic antidepressant treatment, suggesting that this gene may be a molecular target for ECT and antidepressants. The protein is a ubiquitin ligase that functions in the endoplasmic reticulum-associated degradation pathway. Alternative splicing of this gene results in multiple transcript variants. Read-through transcription also exists between this gene and the downstream CHMP3 (charged multivesicular body protein 3) gene. [provided by RefSeq, Oct 2011],

Function : domain:The acidic C-terminus and the basic N-terminus are thought to render the protein in a closed, soluble and inactive conformation through an autoinhibitory intramolecular interaction. The open and active conformation, which enables membrane binding and oligomerization, is achieved by interaction with other cellular binding partners, probably including other ESCRT components.,function:Probable core component of the endosomal sorting required for transport complex III (ESCRT-III) which is involved in multivesicular bodies (MVBs) formation and sorting of endosomal cargo proteins into MVBs. MVBs contain intraluminal vesicles (ILVs) that are generated by invagination and scission from the limiting membrane of the endosome and mostly are delivered to lysosomes enabling degradation of membrane proteins, such as stimulated growth factor receptors, lysosomal enzymes and lipids. The MVB path

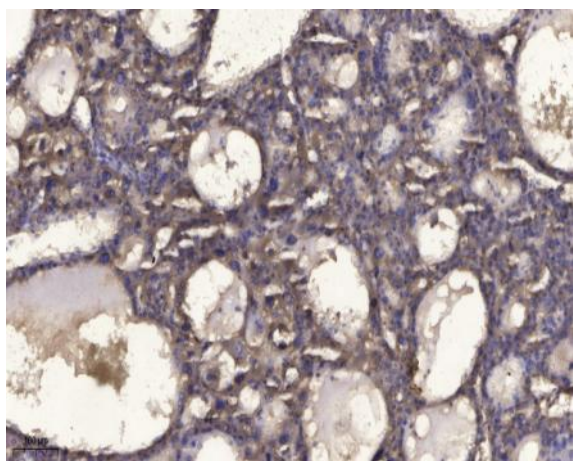
Subcellular Location : Endoplasmic reticulum membrane ; Multi-pass membrane protein .

Expression : Highly expressed in the normal cerebellum but not in the cerebral cortex.

Products Images



Western blot analysis of lysates from HpeG2 cells, primary antibody was diluted at 1:1000, 4° over night



Immunohistochemical analysis of paraffin-embedded human liver cancer. 1, Antibody was diluted at 1:200(4° overnight). 2, Tris-EDTA,pH9.0 was used for antigen retrieval. 3,Secondary antibody was diluted at 1:200(room temperature, 45min).